

# THE MASK

OF KAPPA PSI  
PHARMACEUTICAL  
FRATERNITY



BRIEF  
HISTORY  
NUMBER

NEXT NATIONAL CONVENTION CHRISTMAS HOLIDAYS  
OF 1940

*July, 1939*

# THE MASK

*of Kappa Psi Pharmaceutical Fraternity*

Established in 1904

Official Organ of Kappa Psi Pharmaceutical Fraternity  
of the U. S. of America

A Quarterly Magazine maintained and published in the Interests of the Fraternity,  
College, and University. Published during the months of January, April,  
July, and November by George Banta, Official Printer and Publisher,  
450 to 454 Ahnaip Street, Menasha, Wisconsin. Life  
subscription \$10.00; single copies 25¢;  
yearly subscription \$1.00

## EDITORIAL BOARD

Dr. A. R. Bliss, Jr., (Γ), Editor-in-Chief...East Lake Sta., Box 7, Birmingham, Ala.  
Dr. C. E. Wilson, (Σ), Assistant Editor.....Corinth, Miss.  
Dr. H. A. Langenhan, (Φ).....Univ. of Wash., Seattle, Wash.  
Dr. Ivor Griffith, (H).....P. C. P., Philadelphia, Pa.  
Prof. F. D. Stoll, (Τ).....L. C. P., Louisville, Ky.  
Dr. H. J. Goeckel, (Γ).....191 Lehigh St., Cranford, N.J.  
Dr. F. C. Grill, (B-I).....N. P. C. of Ore., Portland, Ore.  
Dr. L. K. Darbaker, (B-K).....424 Franklin Ave., Wilkinsburg, Pa.  
G. H. Frates, (T-Γ).....809 Flood Bldg., San Francisco, Calif.  
Prof. C. M. Snow, (X).....715 S. Wood St., Chicago, Ill.  
Dr. P. H. Dirstine, (B-II).....Wash. State College, Pullman, Wash.  
Dean J. C. Beard, (B-Ξ).....U. N. C., Chapel Hill, N.C.  
Dr. D. S. Crockett, (Θ).....M. C. Va., Richmond, Va.  
Dean W. F. Gidley, (Γ-Γ).....U. of T., Austin, Texas  
Dr. A. G. Du Mez, (Σ).....U. of Md., Baltimore, Md.  
Dr. H. H. Schaefer, (Γ).....B'klyn C. of P., Brooklyn, N.Y.  
Dean H. S. Johnson, (N).....C. C. P., New Haven, Conn.  
Dr. J. H. Bacon, (B-B).....W. R. U., Cleveland, Ohio  
Dr. A. J. Jongward, (B-Σ).....N. D. S. C., Fargo, N.D.  
F. B. Holt, (N).....Mitchell Ave., Cheshire, Conn.

VOL. XXXVI, No. 3

JULY, 1939

WHOLE NUMBER 147

## C o n t e n t s

A Brief History of Kappa Psi .....	79
The National Officers .....	83
Editorials .....	91
Directory .....	92

# THE MASK

VOL. XXXVI, No. 3

JULY, 1939

WHOLE NUMBER 147

## A BRIEF HISTORY OF KAPPA PSI

Kappa Psi Pharmaceutical Fraternity was founded at the Medical College of Virginia on December 15, 1879. The organization was the first Greek-letter society established in the colleges of pharmacy in the United States. It is a strictly pharmaceutical fraternity which limits its chapters to colleges of pharmacy holding membership in the American Association of Colleges of Pharmacy. There are two classes of chapters, viz., collegiate and graduate. The chapters of both classes have equal rights and privileges. The governing body, called "Alpha Chapter" or The Grand Council, is first on the chapter roll.

1879. <i>Alpha</i> , Grand Council .....	56
1879. <i>Beta</i> , Medical College of Virginia ( <i>Consolidated with Theta 1913</i> ) .....	
1888. <i>Gamma</i> , Columbia University .....	722
1928. <i>Epsilon</i> , University of Minnesota .....	76
1903. <i>Eta</i> , Philadelphia College of Pharmacy & Allied Sciences ...	668
1879. <i>Theta</i> , Medical College of Virginia ( <i>Originally University College of Medicine. Colleges and Chapters merged, 1913</i> ) .....	352
1907. <i>Iota</i> , Medical College of South Carolina .....	141
1906. <i>Kappa</i> , Birmingham Medical College, College of Pharmacy ( <i>School discontinued 1915</i> ) .....	56
1907. <i>Lambda</i> , Baylor University ( <i>School discontinued 1930</i> ) .....	63
1907. <i>Mu</i> , Massachusetts College of Pharmacy .....	477
1927. <i>Mu Omicron Pi</i> , Detroit College of Pharmacy .....	134
1928. <i>Nu</i> , Connecticut College of Pharmacy .....	113
1925. <i>Xi</i> , Ohio State University .....	69
1907. <i>Omicron</i> , Vanderbilt University ( <i>School discontinued 1922</i> ) ..	91
1928. <i>Pi</i> , Purdue University .....	112
1932. <i>Rho</i> , University of Kansas .....	42
1898. <i>Sigma</i> , University of Maryland .....	359
1909. <i>Tau</i> , University of Southern California .....	207
1909. <i>Upsilon</i> , Louisville College of Pharmacy .....	288
1910. <i>Phi</i> , Northwestern University ( <i>Merged with Chi, 1920</i> ) ....	351
1910. <i>Chi</i> , University of Illinois .....	831
1910. <i>Psi</i> , University of Tennessee .....	228
1910. <i>Omega</i> , Rutgers University College of Pharmacy .....	178
1910. <i>Beta-Beta</i> , Western Reserve University .....	294
1910. <i>B-Gamma</i> , University of California .....	351
1910. <i>B-Delta</i> , Union University (Albany, N.Y.) .....	519



1911. <i>B-Epsilon</i> , Rhode Island College of P. & A. S. ....	691
1911. <i>B-Zeta</i> , Oregon State College .....	287
1925. <i>B-Eta</i> , University of West Virginia ( <i>Dormant</i> ) .....	92
1926. <i>Beta-Theta</i> , Tulane University ( <i>School discontinued</i> ) .....	51
1913. <i>B-Iota</i> , North Pacific College of Oregon .....	214
1913. <i>B-Kappa</i> , University of Pittsburgh .....	996
1925. <i>B-Lambda</i> , University of the City of Toledo .....	107
1926. <i>B-Mu</i> , Valparaiso University ( <i>School discontinued 1939</i> ) ..	128
1914. <i>B-Nu</i> , Creighton University ( <i>Dormant</i> ) .....	232
1915. <i>B-Xi</i> , University of North Carolina .....	182
1916. <i>B-Omicron</i> , University of Washington ( <i>Dormant</i> ) .....	237
1916. <i>B-Pi</i> , Washington State College .....	268
1926. <i>B-Rho</i> , University of Mississippi .....	69
1923. <i>B-Sigma</i> , North Dakota State College, Fargo, N.D. ....	171
1917. <i>B-Tau</i> , Marquette University ( <i>School discontinued 1920</i> ) ....	42
1930. <i>B-Upsilon</i> , Indianapolis College of Pharmacy .....	84
1927. <i>B-Phi</i> , Cincinnati College of Pharmacy .....	285
1930. <i>B-Chi</i> , Des Moines College of Pharmacy .....	62
1919. <i>B-Psi</i> , University of Wisconsin .....	261
1930. <i>B-Omega</i> , Temple University .....	61
1934. <i>Gamma-Gamma</i> , University of Texas ( <i>Dormant</i> ) .....	35
1920. <i>G-Delta</i> , Ohio Northern University .....	283
1920. <i>G-Epsilon</i> , University of Nebraska ( <i>Dormant</i> ) .....	227
1935. <i>G-Zeta</i> , Howard College of Birmingham .....	43
1920. <i>G-Eta</i> , University of Montana .....	146
1920. <i>G-Iota</i> , University of Buffalo .....	192
1921. <i>G-Omicron</i> , University of Oklahoma .....	167

*Graduate Chapters* exist at Philadelphia, New York, Baltimore, Birmingham, Chicago, Boston, Albany, Providence, San Francisco, Cleveland, North Carolina, Nashville, Memphis, Richmond, South Carolina, Brooklyn, Portland, Florida, Kentucky, West Virginia, Mississippi, Omaha, Milwaukee, New Jersey, Buffalo, North Dakota, Los Angeles, Seattle, Cincinnati, Harrisburg, Connecticut, Toledo, Pittsburgh, Detroit, Raleigh and Columbus.

*Total Chapters*: 89 (Collegiate Chapters, 53; Graduate Chapters, 36).  
*Total Membership*: 12,395.

The following chapters possess houses: Eta, Theta, Mu, Pi, Rho, Sigma, Chi, Psi, Beta-Beta, Beta-Gamma, Beta-Delta, Beta-Zeta, Beta-Iota, Beta-Kappa, Beta-Nu, Beta-Xi, Beta-Pi, Beta-Sigma, Beta-Psi, Beta-Omega, Gamma-Delta, Gamma-Iota; total value, \$550,000.

The following chapters of Kappa Psi were formed from local organizations; *Eta* from Delta Gamma Phi; *Upsilon* from Pi Mu; *Phi* and *Chi* from the Alpha and Beta Chapters of Phi Gamma Sigma; *Omega* from Spatula Club; *Beta-Epsilon* from Psi Beta; *Beta-Kappa* and *Gamma-Gamma* from Beta Phi Sigma; *Beta-Omicron* from Beta Psi; *Beta-Pi* from Sigma Gamma; the *Phi Beta Delta* fraternity was merged with Eta in 1917; *Mu Omicron Pi* from a local of that name; *Nu* from Chi



Alpha Phi; *Pi* from the Golden Spatula; *Beta-Phi* from a local of like name; *Beta-Eta* from Sigma Psi; *Beta-Sigma* from Mu Pi; *Gamma-Eta* from a local, Phi Chi; *Gamma-Omicron* from the Hippocrates Club.

The Fraternity is divided into fifteen provinces. It publishes its Constitution and By-Laws; *The Agora*, an esoteric publication which contains the directory and which was published annually from 1903 to 1910, since then every five years; THE MASK, a periodical, issued every month during the college years from 1903 to 1910, and since then issued as a quarterly; and a song book.

The Fraternity is governed by "Alpha Chapter" or the Grand Council which has met in annual conventions from 1879 to 1908, until 1922 biennially, and since then every four years. During the interim between sessions, the administration of the fraternity affairs is in the hands of the Grand Officers. The provinces meet in conventions during years other than the national convention years.

The Fraternity colors are scarlet and cadet gray. The flower is the red carnation. The badge is a diamond displaying a mask raised from the face of the black enamel center. The Greek letters "Kappa" and "Psi" appear one above and one below the mask. The eyes of the mask and the border of the badge may be jeweled.

## PAST GRAND OFFICERS

### GRAND REGENT

Barksdale Hales, 1879-1890	Josiah S. Bowen, 1903-1904
John E. Coles, 1890-1892	J. Peebles Proctor, 1904-1905
William E. Anderson, 1892-1894	Frederic W. Rugg, 1905-1906
Charles W. Strop, 1894-1896	Robinette B. Hayes, 1906-1910
F. Harvey Smith, 1896-1901	Justin F. Grant, 1910-1913
Press W. Eldridge, Jr., 1901-1904	Henry W. Colson, 1913-1920
Josiah S. Bowen, 1904-1906	Victor J. Anderson, 1920-1924
George L. Holstein, 1906-1910	F. J. Amrhein, 1925-1932
Robinette B. Hayes, 1910-1913	A. O. Mickelsen, 1928-1934
Justin F. Grant, 1913-1920	C. M. Snow (1st), 1934-1937
J. Dawson Reeder, 1920-1924	G. H. Frates (2nd), 1934-1937
W. Bruce Philip, 1924-1932	H. W. Youngken (3rd), 1934-1937
F. J. Amrhein, 1932-1934	C. L. O'Connell (1st), 1937-
A. O. Mickelsen, 1934-1937	H. C. Wood (2nd), 1937-
H. W. Youngken, 1937-	C. E. Mollett (3rd), 1937-

### GRAND VICE-REGENT

John E. Coles, 1879-1890  
 William E. Anderson, 1890-1892  
 Charles W. Astrop, 1892-1894  
 Forest A. Williams, 1894-1896  
 Press W. Eldridge, Jr., 1896-1901  
 H. Philip Hill, Jr., 1901-1902  
 Bernard P. Muse, 1902-1903

### GRAND SECRETARY AND TREASURER

Lawrence Ingram, 1879-1888  
 Cowles M. Vaiden, 1888-1891  
 Forest A. Williams, 1891-1894  
 McGuire Newton, 1894-1896  
 Louis Bishop, 1896-1900  
 Lewis Oakley, 1900-1902  
 J. Dawson Reeder, 1902-1903

J. Peebles Proctor, 1903-1904  
 George L. Holstein, 1904-1906  
 Press W. Eldridge, Jr., 1906-1934  
 A. Richard Bliss, Jr., 1934-

### GRAND REGISTRAR AND EDITOR

Cowles M. Vaiden, 1879-1888  
 Forest A. Williams, 1888-1891  
 Hamilton P. Howard, 1891-1894  
 Herman B. Anderson, 1894-1896  
 Lewis Oakley, 1896-1904  
 H. Philip Hill, Jr., 1904-1905  
 Press W. Eldridge, Jr., 1905-1906  
 Henry J. Goekel, 1906-1910  
 A. Richard Bliss, Jr., 1910-1930

### GRAND HISTORIAN

Lewis Oakley, 1896-1903  
 H. Philip Hill, Jr., 1903-1904  
 Frederic W. Rugg, 1904-1905  
 Press W. Eldridge, Jr., 1905-1906  
 Henry J. Goekel, 1906-1910  
 A. Richard Bliss, Jr., 1910-1920  
 W. Bruce Philip, 1920-1924  
 L. K. Darbaker, 1924-1937  
 G. C. Schicks, 1937-

### GRAND RITUALIST

F. D. Stoll, 1928-1937  
 L. Templeton, 1937-

### GRAND COUNSELOR

W. Bruce Philip, 1932-1936  
 A. O. Mickelsen, 1937-

## RECORD OF GRAND COUNCIL CONVENTIONS

(Since 1916 National Conventions meet every four years.)

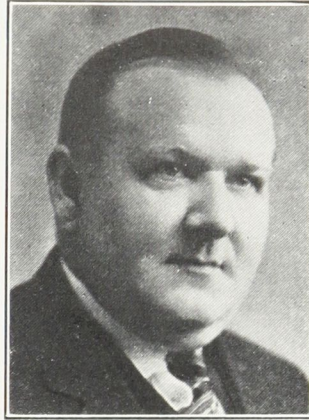
<i>Place</i>	<i>Date</i>
Richmond, Virginia .....	Thanksgiving, 1886-1895
New Haven, Connecticut .....	Thanksgiving, 1896-1899
New York, New York .....	March 31, 1900
Baltimore, Maryland .....	January, 14, 1901
Baltimore, Maryland .....	February 15, 1902
Richmond, Virginia .....	November 26, 27, 1902
Washington, D.C. ....	November 26, 27, 1903
Philadelphia, Pennsylvania .....	November 24, 25, 1904
New York, New York .....	November 30, 1905
New York, New York .....	December 2, 1905
Baltimore, Maryland .....	November 29, 30, 1906
Philadelphia, Pennsylvania .....	November 28, 29, 30, 1907
Charleston, South Carolina .....	November 26, 27, 28, 1908
Birmingham, Alabama .....	November 24, 25, 26, 1910
Chicago, Illinois .....	November 26, 27, 28, 1913
Atlanta, Georgia .....	November 13, 14, 15, 1916
New York, New York .....	December 28, 29, 30, 1920
New York, New York .....	December 28, 29, 30, 1924
(Pacific Section, Portland, Oregon, Nov. 27, 28, 29, 1924)	
St. Louis, Missouri, Section, Nov. 27, 28, 29, 1924)	
Portland, Maine .....	August 17, 18, 1928
New York, New York ( <i>Grand Officers only</i> ). Christmas Holidays of 1932	
St. Louis, Missouri ( <i>Cancelled by vote of the Chapters because of the "depression."</i> ) .....	Christmas Holidays of 1936
Next National Convention .....	Christmas Holidays of 1940

## THE NATIONAL OFFICERS

## DR. HEBER W. YOUNGKEN, GRAND REGENT

Heber Wilkinson Youngken was born on a farm in Richland Township, Bucks Co., Pennsylvania, October 31, 1885. At the age of 2, his parents moved to Quakertown, Pennsylvania, where his father established in the florist and nursery business. He received his early education in the public schools and high school of Quakertown, and at an early age acquainted himself with the plants his father grew, and became very fond of them.

In 1901 he entered the drug store of Howard R. Moyer in Quakertown where he served an apprenticeship of over 2 years under conditions conducive to study. In the fall of 1903, he entered the Department of Pharmacy of the Medico-Chirurgical College of Philadelphia. He was graduated from "Medico-Chi" in 1905 with the degree of Ph.G.



DR. H. W. YOUNGKEN  
Grand Regent

Desiring a broad academic education he then entered Bucknell University, taking most of his electives in Biology, and graduated from that institution with the A.B. *cum laude* in 1909. In the fall of 1909 he matriculated in the Department of Medicine of the Medico-Chirurgical College, and was appointed a Demonstrator of Botany and Pharmacognosy under the late Dr. Chas. H. Shaw. During his second year in medicine, he served as Demonstrator of Biology and as Demonstrator of Bacteriology.

He had completed two years of the medical course by the summer of 1911 when he was elected Instructor in Botany and Pharmacognosy and Director of the Botanical Laboratory in the Department of Pharmacy of "Medico-Chi." He was given the opportunity to complete post-graduate work at Bucknell University. In the spring of 1912 he was graduated there with the degree of A.M.

On September 12, 1911, he married Clara M. Eastman of Bloomsburg, Pennsylvania. In 1912, "Medico-Chi" promoted him to an Assistant Professorship in Botany and Pharmacognosy, and gave him the opportunity to pursue graduate work at the University of Pennsylvania. He entered the Graduate School of the University of Pennsylvania the summer of 1912, taking his major in Botany and minors in Zoölogy and Physiology, and graduated from that institution with the M.S. in 1914 and the Ph.D. in 1915. His doctorate dissertation was entitled, "The Comparative Morphology, Taxonomy and Distribution of the Myricaceæ of the Eastern United States." In 1914 he was promoted to Adjunct Professor and in 1916 to Professor.



After the merger of the Medical and Dental units of "Medico-Chi" with the University of Pennsylvania in 1916, and the merging of the Pharmacy Department with the Philadelphia College of Pharmacy, he was called by the P.C.P. as Assistant Professor of Botany and Pharmacognosy. In 1917, he became Acting Professor, and in 1918 Professor and Director of the Microscopical Laboratories. While engaged with his duties there, he laid out the Botanical Gardens of this institution at Glenolden, Pennsylvania, and carried on extensive researches. During 1918-19, he served also as Professor of Biology at Ursinus College.

In 1919, the Philadelphia College of Pharmacy conferred upon him the degree of Master of Pharmacy. In 1934, Bucknell University awarded him the degree of Doctor of Science (*honoris causa*). In 1923 he was called to the chair of Botany, Pharmacognosy and Materia Medica at the Massachusetts College of Pharmacy.

He joined the American Pharmaceutical Association in 1912, and has been active in many spheres of usefulness in that organization, having served as a member of a number of its committees as well as Secretary and Chairman of its Scientific and Historical Sections. In 1926 he served as Executive Secretary of Section K of the 4th International Botanical Congress held at Ithaca, New York. He has served also as a member of the Revision Committee of the U.S.P. X and XI; as Editor of the Section on Pharmacognosy and Pharmaceutical Botany of *Botanical Abstracts* and *Biological Abstracts*; and as Botanical Editor of the last two editions of the *U. S. Dispensatory*. He has been Chairman of the Committee on Pharmacognosy and Pharmaceutical Botany of the National Research Council since that committee was established in 1922. He served as President of the Plant Science Seminar, 1927 to 1928, and as President of the Boston Druggists Association during 1934 and 1935.

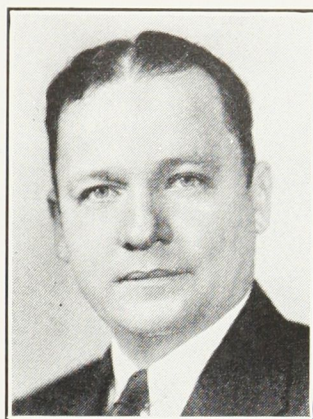
He has written a textbook on "Pharmaceutical Botany" which has passed through 5 revisions, and "A Text Book of Pharmacognosy" which has passed through 4 revisions. He has contributed numerous articles on botanical, pharmacognostical and biological subjects to the scientific literature. In 1925 and again in 1931 he was awarded the Ebert medal.

He is a Fellow of the A.A.A.S., a member of the A.Ph.A., Botanical Society of America, New England and Philadelphia Botanical Clubs, Boston Druggists Association, the New Hampshire and Vermont Pharmaceutical Associations, the Massachusetts Horticultural Society, Herb Society of America, Society of Sigma Xi, etc. He is interested in civic affairs, being a Town Meeting Member from his home precinct in Arlington. In fraternal organizations, he is an officer in Hiram Lodge, A.F. & A.M., a member of the Royal Arch Chapter, the Eta and Mu chapters of Kappa Psi, and the Phi Chi Medical Fraternity. His name appears in *Who's Who in America*, *American Men of Science*, and *Who's Who Among North American Authors*.

---

**DR. C. L. O'CONNELL, GRAND FIRST VICE-REGENT**

C. Leonard O'Connell was born in Pittsburgh, Pennsylvania. He was educated in the public and high schools of that city, and graduated from the School of Pharmacy, University of Pittsburgh, in 1912 and from the College of the University, with an A.B. degree in 1916. He received the degree of Doctor of Pharmacy from the University in 1929. In 1932, he received the degree of Master of Pharmacy (*hon.*) from the Philadelphia College of Pharmacy and Science, the oldest college of pharmacy in the United States. Since 1922 he has been a member of the faculty of the School of Pharmacy of the University of Pittsburgh. He was made Associate Dean in 1930, and Dean in 1932.



**DR. C. L. O'CONNELL**  
Grand 1st Vice-Regent

He is active in local, state and national pharmaceutical associations. Dr. O'Connell was President of the Pennsylvania Pharmaceutical Association, was reelected twice, and presided at three annual conventions. He is also a member of the International Federation Pharmaceutique, and for a number of years was one of the American correspondents. He belongs to the American Pharmaceutical Association, Pennsylvania Pharmaceutical Association, and the American Association for the Advancement of Science. He is married and has four sons. He is a member and director of the Allegheny County Civic Club, and is Chairman of the Board of Managers of the Juvenile Detention Home of Allegheny County.

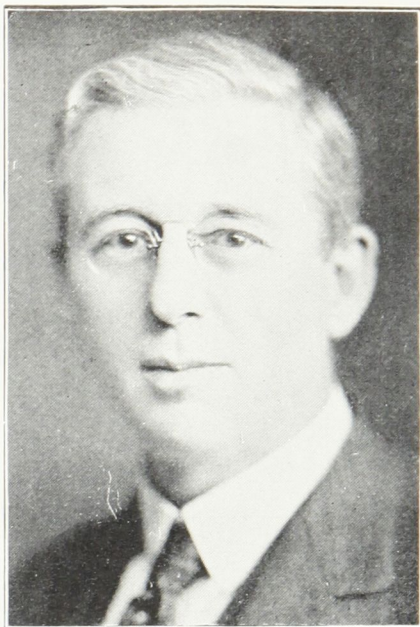
---

**DR. HORATIO C. WOOD, GRAND SECOND VICE-REGENT**

Horatio Charles Wood (Jr.) was born in Philadelphia, Pennsylvania, on February 26, 1874, the son of Dr. Horatio C. and Eliza H. (*Longacre*) Wood. He graduated from the world-famous William Penn Charter School of Philadelphia in 1890 and then entered the liberal arts division of the University of Pennsylvania where he spent two years in preparation for the medical school of the same institution. In 1896 he received the M.D. degree from Pennsylvania, and spent the year 1898 in research work at the University of Turin. The years 1907-08 were occupied in doing research work at the University of Berne.

On December 19, 1899, Dr. Wood married Alice L. Lovell of Huntingdon, Pa.; there are two children, Horatio C., III, and Florence L. From 1898 to 1907 Dr. Wood was Demonstrator in pharmacodynamics at the University of Pennsylvania; Associate Professor of pharmacology from





HORATIO C. WOOD  
Grand 2nd Vice-Regent

1907 to 1910; Professor of pharmacology and therapeutics in Medico-Chirurgical College of Philadelphia from 1910 to 1916; professor of the same in the University of Pennsylvania, since 1916; Professor of materia medica, Philadelphia College of Pharmacy and Science since 1921.

From 1904 to 1908 Dr. Wood was assistant visiting physician to the Philadelphia General Hospital. Since 1910 he has been a member of the Committee of Revision of the U. S. Pharmacopoeia. He is a member of many societies, including the A.A.A.S. (Fellow), American Society of Pharmacology, A.Ph.A., etc. Dr. Wood is a Presbyterian. He was editor of *Therapeutics* with his father, 11th to 13th editions, and alone since 1899; of the *U. S. Dis-*

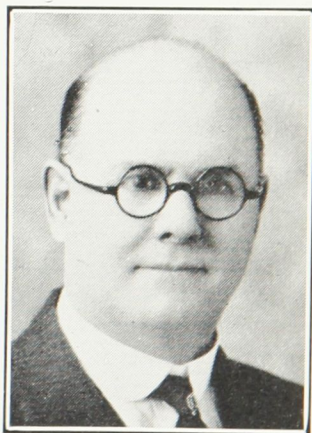
*pensatory*, 20th, 21st, and 22nd editions; and is author of the text book on Pharmacology, published by Lippincott.

#### DEAN C. E. MOLLETT, GRAND THIRD VICE-REGENT

Charles Edwin Francis Mollett, Ph.C., B.A., M.S., was born in Erie, Kansas, January 21, 1879, and was educated in the schools of Neosho County, Kansas. He taught school and attended the State Teacher's College at Emporia, Kansas, after which he entered Kansas State University, where he graduated from the School of Pharmacy.

He practiced retail and wholesale pharmacy in Missouri; also served as a pharmacist in Kansas and Montana, registering as a pharmacist in the latter state in 1907.

Dean Mollett organized the Department of Pharmacy in the Montana State College in the fall of 1907, but this de-



DEAN C. E. MOLLETT  
Grand 3rd Vice-Regent



partment was later transferred to the Montana State University in 1913. He has served as Dean and professor of the school since that time.

He is a member of the First Christian Church of Missoula; also a member of the Lions Club, Masonic Blue Lodge, Scottish Rite, and the Shrine. He has served Pharmacy well and long, and has received well-deserved recognition and honors in the field of pharmaceutical education.

---

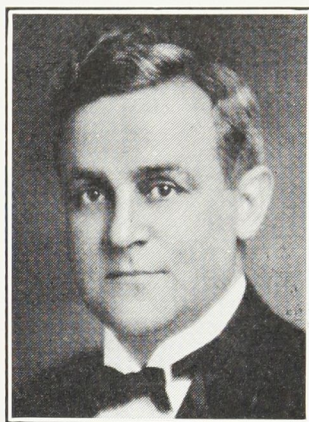
**DR. A. RICHARD BLISS, JR., GRAND SECRETARY  
AND TREASURER**

Dr. Bliss is a native son of New York City, having been born there on November 10, 1889. He was educated in New York City, where he attended the New York College of Pharmacy and Columbia University; at Howard College of Birmingham, and the University of Alabama. His degrees are Ph.Ch., B.S., M.A., Ph.D., and M.D., and the honorary degree of LL.D.

After receiving his doctorate at Columbia, Bliss accepted a call to the University of Alabama as adjunct professor of chemistry and pharmacology at Tuscaloosa. He was advanced to a full professorship in the medical, dental and pharmaceutical schools in the Birmingham Branch, and later served as Dean of the College of Pharmacy and Professor of Biochemistry and Pharmacology in the Graduate School of Medicine at the University of Alabama. He was called in similar capacities to Emory University School of Medicine in Atlanta, Georgia, and to the University of Tennessee Health Division at Memphis, Tennessee, where he remained until 1934, when he was called to Howard College of Birmingham, as Dean of Pharmacy, and Professor of Pharmacology.

He has made many contributions to the advancement of science and education. At the Birmingham Branch of the University of Alabama, the pharmacology, chemistry and pharmacy laboratories were planned, built and equipped by him. At Emory University and at the University of Tennessee, he planned, arranged and equipped the pharmacology, physiology and pharmacy laboratories. He invented several types of animal cages and other scientific apparatus.

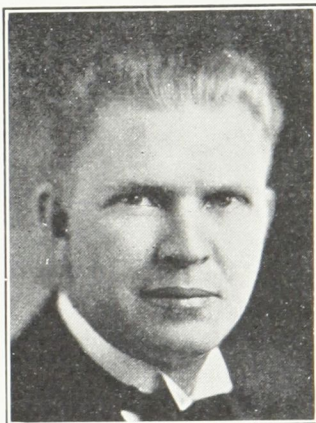
In addition to his work as a researcher, organizer of scientific departments, and builder of laboratory buildings, Dr. Bliss is equally well-known as an educator, in which capacity he has given of his knowledge and experience in about two hundred publications, papers, and in text and reference books.



A. RICHARD BLISS, JR.  
Grand Secretary and Treasurer

He is a fellow and a member of many learned societies, including A.I.C., A.A.A.S., A.A.P.S.S., A.G.S., A.O.A.C., A.Ph.A., A.C.S. etc.; K A, Θ K Ψ, I Σ, Σ T Δ, Φ Γ M, Θ N E, X B Φ; Mason, 32°, K.T., Shrine, Rotary, University, Army & Navy, Medical Authors, Churchmen's clubs, etc. Dr. Bliss is a member of the United States Pharmacopoeia Committee of Revision, and was a Lieutenant in the U. S. Army Medical Department during the World War, and a Passed Assistant Surgeon in the U. S. Public Health Service Reserve. He is an Episcopalian. His biography appears in the current editions of *Who's Who in America*, *The Blue Book* (London), *Burke's Landed Gentry*, *Chemical Who's Who*, *Who's Who in American Medicine*, *Who's Who Among North American Authors*, *Who's Who in American Education*, *Who's Who in American Pharmacy*, *The Cyclopedia of American Biography*, *Leaders in Education*, *Greek* (Fraternity) *Leaders*, and *American Men of Science*.

#### DEAN ANTONE O. MICKELSEN, GRAND COUNSELOR



ANTONE O. MICKELSEN  
Grand Counselor

Dean Antone O. Mickelsen was installed as Grand Regent of Kappa Psi, May 9, 1934, at Washington, D.C. He has served as Chairman of the Executive Committee and Satrap of the Northwest Province of Kappa Psi. He retired as Grand Regent August 18, 1937, and was installed as Grand Counselor.

Dean Mickelsen first became associated with North Pacific College of Oregon in 1923; in 1928, he became Dean of Pharmacy, North Pacific College of Oregon; and holds that position at the present time.

He is recognized as the first to introduce strictly dental pharmacy in the Pacific Northwest, and is a member of the National Committee on Professional Information Pertaining to Dental Pharmacy of the American Pharmaceutical Association. He is deeply interested in advancing professional pharmacy, and it was largely through his efforts that a branch of the American Pharmaceutical Association was organized in Portland, 1933. The branch is known as the North Pacific Branch of A.Ph.A.

He was most active in bringing the American Pharmaceutical Convention to Portland, Oregon, August, 1935, and served as Local Secretary of the Portland Convention. When the American Medical Association held its meeting in Portland, 1928, Dean Mickelsen was Chairman of the U. S. P. Exhibit, which was awarded the Certificate of Merit for an outstanding educational display at the convention. He was vice-president of the A.Ph.A. 1938-39.



He has been active in radio talks and publicity in behalf of professional pharmacy and was Local Chairman of Pharmacy Week. He gave the only professional pharmacy exhibit for the Pacific Coast Medical Association Meeting at Portland, Oregon, July, 1936.

Aside from his interests in professional pharmacy and Kappa Psi, he takes an active part in civic organizations. He is a Royal Rosarian; is a present Secretary of the Rose City Dance Group; and served as General Chairman of the Judges of the Grand Floral Parade, June 12, at Portland, Oregon. He fosters the spirit "For You a Rose, in Portland Grows."

Dean Mickelsen served in the World War, and is a member of Post No. 1 of the American Legion, Portland, Oregon.

---

### **DEAN GEORGE C. SCHICKS, GRAND HISTORIAN**

On May 11, 1893, in a little town named Munson in Massachusetts, Brother Schicks first breathed the stimulating New England air. In due time, he graduated from the grammar and high schools, and later entered the Massachusetts College of Pharmacy, graduating with the degree of Ph.G. He continued his studies at Valparaiso University, Valparaiso, Indiana, and received the degree of Ph.C. Since then he continued his studies at Chicago and Rutgers Universities. He was former Dean of Valparaiso University College of Pharmacy and at present is Assistant Dean and Professor of Materia Medica and Dispensing Pharmacy at Rutgers University College of Pharmacy in Newark, New Jersey, where he has been for the last ten years.

He is Chairman of the Committee on Dental Pharmacy for the American Pharmaceutical Association, Chairman of the Professional Relations Committee for the American Association of Colleges of Pharmacy, was Chairman of District No. 2 of Joint Meetings of Boards and Colleges, a member of the Revision Committee for the Recipe Book, and a member of many other committees.

---

### **DR. LAWRENCE TEMPLETON, GRAND RITUALIST**

Dr. Templeton graduated from the School of Pharmacy, Oregon State College, in 1927. He received Ph.C. and B.S. degrees, and later the M.S. and Ph.D. degrees, from the University of Illinois Graduate School.

On graduation from Oregon State College he became a member of the faculty of the University of Illinois College of Pharmacy, Department of Pharmacy, and has just completed ten years of service in that capacity.

He is a member of Kappa Psi, Rho Chi, and Sigma Xi Fraternities, and served as Secretary of the Chicago Branch of the American Pharmaceutical Association for 6 years; recently he was elected first Vice-President of the Chicago Branch of the A.Ph.A.

Brother Templeton is a loyal "Knight of Psi," and a most competent and enthusiastic and popular member of the Illinois pharmacy faculty.



**DR. C. E. WILSON, ASSISTANT TO THE G. S. & T.**

Charles E. Wilson, recently appointed Assistant to the Grand Secretary and Treasurer of Kappa Psi, arrived in this world on September 13, 1890, at Pacolet, Spartanburg County, South Carolina, the son of Edwin Morgan and Virginia Jeter Wilson.

He was educated in the public schools of South Carolina, and, having completed his preliminary education, entered Leesville College of South Carolina from which he graduated with the Bachelor of Science degree in 1909. Wilson then entered the University of Maryland at Baltimore, and in 1913 graduated with the doctorate, Phm.D. He was successfully active in retail pharmacy in South Carolina where he was a partner with Mose D. Huiett in the Palmetto Drug Company of Union, South Carolina. In 1916, Doctor Wilson married Miss Geraldine Bell of Corinth, Mississippi. In 1917 he moved to Mississippi, and two years later established the Wilson Drug Company of Corinth. On December 28, 1924, he was burned out, but on January 12, 1925, reopened for business!

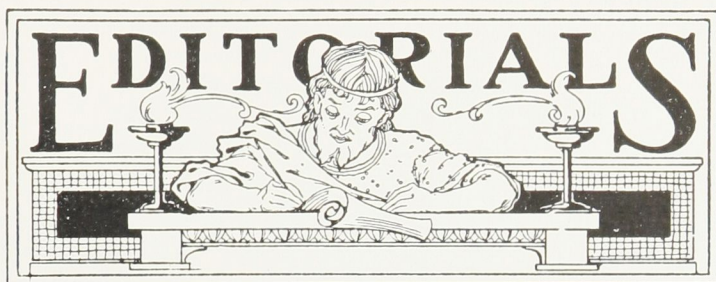
Doctor Wilson has been continuously active in professional, civic, social and religious life. He served for four years as secretary of the Mississippi Board of Pharmacy and as Examiner in Practical Pharmacy. He was President for two terms of the Mississippi State Pharmaceutical Association, the second time in forty-six years a president of that organization succeeded himself. During his presidency, the membership soared to new heights and attendance at the annual conventions reached a new peak. During the days of the N.R.A., Brother Wilson served as secretary of his congressional district of N.R.A.

He is a Mason, Knight Templar and Shriner, and served three successive terms as Commander of the local Knights Templar. During his first year at the University of Maryland, he was initiated into Kappa Psi, and is now the Satrap of the South Atlantic Province of the Fraternity. Brother Wilson is a member of the Methodist Episcopal Church, and served for many years as a member of the Board of Stewards of his church at Corinth.

Wilson is a member of the staff of the McRae Hospital of Corinth, director of the Division of Pharmacy of that institution, and Lecturer in Chemistry in the McRae School of Nursing. For a number of years he was Assistant Editor and Editor of *The Druggist*. In addition to practicing pharmacy at Corinth, Doctor Wilson is Director of the Division of U. S. P. and N. F. Extension for the Mississippi State Board of Pharmacy. He is doing a splendid piece of constructive work for pharmacy. (Continued on page 91)



**DR. CHARLES E. WILSON**  
Assistant to the Grand Secretary and Treasurer



This issue is intended as an aid to our collegiate chapters in the 1939 fall rushing. It carries a brief history of the Fraternity and write-ups of the national officers. These, with the Chapter Roll spread over the back pages, plus the purposes and aims of K  $\Psi$ , as stated in the Constitution, should prove effective ammunition in the rush campaigns.

The issue was planned to be late to better insure its availability at the time needed, but not this late. The reason for the "added" lateness was the sudden serious illness of the Editor (G. S. & T.) on the very first day of the A.Ph.A. meetings in Atlanta—August 21. He writes these lines in Atlanta, where he is convalescing, but will soon be back in Birmingham where he will complete his convalescence before returning to full routine in the office. He appreciates the many calls, inquiries, telegrams, cards and messages of good cheer the members and chapters of K  $\Psi$  have so thoughtfully sent him, and expresses his sincere thanks.

The Editor, as soon as he was permitted to sit up, got out this issue himself in Atlanta, while his faithful assistant, Dr. Wilson, is carrying on other important K  $\Psi$  work and helping compile material for the November MASK, which will contain, among other things, an account of the most successful K  $\Psi$  meeting and luncheon held in Atlanta during the A.Ph.A. sessions, as well as the Report of the G. S. & T.

---

#### DR. C. E. WILSON, ASSISTANT TO THE G. S. & T.

*(Continued from page 90)*

He is a member of the Mississippi Pharmaceutical Association, the American Pharmaceutical Association, the National Association of Retail Druggists, etc. As a member of the Corinth Chamber of Commerce, he has served in many capacities, and was elected president of that body. His hobbies, he says, are fishing and pharmacy.

# Kappa Psi Pharmaceutical Fraternity Directory

CENTRAL OFFICE: Address—Kappa Psi Fraternity, East Lake Sta.,  
P. O. Box 7, Birmingham, Ala.

## EXECUTIVE CHAPTER

Founded December 15, 1879—Incorporated 1903

### Alpha.....Grand Council, Wilmington, Del.

Grand Regent—Dr. H. W. Youngken, H.....179 Longwood Ave., Boston, Mass.  
First Grand Vice-Regent—Dean C. L. O'Connell, B-K.....  
.....U. of P. College of Pharmacy, Pittsburgh, Pa.  
Second Grand Vice-Regent—Dr. H. C. Wood, Jr., H.....  
.....P. C. of P. & S., Philadelphia, Pa.  
Third Grand Vice-Regent—Dean C. E. Mollett, F-H.....  
.....M. S. U. Sch. of Phar., Missoula, Mont.  
Grand S. & T.—Dean A. R. Bliss, Jr., F.....  
.....East Lake Sta., P. O. Box 7, Birmingham, Ala.  
Grand Historian—Dean G. C. Schicks, Q.....Rutgers U. C. of P., Newark, N.J.  
Grand Ritualist—Prof. L. Templeton, X.....Univ. of Ill., C. of P., Chicago, Ill.  
Grand Counselor—Dean A. O. Mickelsen, B-I...North Pacific College, Portland, Ore.  
Assistant to G. S. & T.—Dr. C. E. Wilson, Σ.....Corinth, Miss.

## EXECUTIVE COMMITTEE

Dr. H. C. Wood, Jr., H, Chairman.....Philadelphia, Pa.  
Dr. H. W. Youngken, M.....Boston, Mass.  
Dr. George L. Holstein, H.....365 N. Ninth St., Lebanon, Pa.  
Dr. P. S. Pittinger, H....Research Laboratories, Sharpe & Dohme, Baltimore, Md.  
Wiley Robinson, Ψ.....2 North Main St., Memphis, Tenn.

## LEGISLATIVE COMMITTEE

Dean C. E. Mollett, F-H, Chairman.....Missoula, Mont.  
Prof. C. M. Snow, X.....715 S. Wood St., Chicago, Ill.  
Dr. H. J. Goeckel, F.....191 Lehigh St., Cranford, N.J.

## EXTENSION COMMITTEE

Dean C. L. O'Connell, B-K, Chairman .....Pittsburgh, Pa.  
Geo. H. Frates, B-I .....809 Flood Bldg., San Francisco, Calif.  
Prof. F. S. Kimball, B-Σ .....2915 Budlong Ave., Los Angeles, Calif.  
Dr. H. A. Langenhan, Φ .....University of Washington, Seattle, Wash.  
Prof. H. W. Colson, X .....7633 Vernon Ave., Chicago, Ill.  
Prof. R. L. McMurray, B-Σ .....Ohio State Univ., Columbus, Ohio.  
Dr. L. V. Hendricks, H, B-Σ.....834 Kearney St., Portland, Ore.  
Dr. W. F. Gidley, F-I .....Austin, Tex.  
Dr. H. J. Goeckel, F.....191 Lehigh St., Cranford, N.J.  
R. S. Johnson, A.....Shinnston, W.Va.  
Dr. J. A. Black, Σ.....  
.....Hynson Westcott and Dunning Co., Charles and Chase St., Baltimore, Md.  
Pascal Everts, F.....84th St. & Bdway., New York, N.Y.  
F. J. O'Brien, B-Δ.....A. C. P. Albany, N.Y.

## PROVINCE I

(Chapters in Albany, Buffalo, Providence and Boston)

Supervising Grand Officer: Grand Regent Heber W. Youngken  
Satrap: D. Holloway, 19 Fessenden Rd., Arlington, Mass.  
Secretary: G. F. Archambault, Boston, Mass.

## PROVINCE II

(Chapters in Harrisburg, Philadelphia, New York City, New Haven, and Newark)

Supervising Grand Officer: Grand Historian George C. Schicks  
Satrap: G. E. Milliman, Bound Brook, N.J.  
Secretary: Prof. J. L. Cox, N.J. College of Pharmacy, Newark, N.J.

## PROVINCE III

(Chapters in Baltimore, Washington, D.C., Richmond, and Chapel Hill)

Supervising Grand Officer: Grand Vice Regent H. C. Wood, Jr.  
Satrap: Eldon Roberts, Jr., Medical College of Va., Richmond, Va.  
Secretary: Thomas D. Rowe, Medical College of Va., Richmond, Va.

## PROVINCE IV

(Chapters in Georgia, South Carolina, and Florida)

Supervising Grand Officer: G. S. and T. A. Richard Bliss, Jr.  
Satrap: A. E. Butler, 47½ Columbus, Charleston, S.C.  
Secretary: F. B. Daniez, Hogansville, Ga.



## PROVINCE V

(Chapters in Pittsburgh, Morgantown, W.Va., Detroit, Toledo, Ada, and Cleveland)

Supervising Grand Officer: Grand Vice Regent C. L. O'Connell

Satrap: Dr. L. K. Darbaker, Pittsburgh, Pa.

Secretary:

## PROVINCE VI

(Chapters in Lafayette, Indianapolis, Columbus, Cincinnati, and Louisville)

Supervising Grand Officer: Grand Vice Regent C. L. O'Connell

Satrap: Prof. F. D. Stoll, Louisville, Ky.

Secretary: O. G. Anderson, Indianapolis, Ind.

## PROVINCE VII

(Chapters in Arkansas, Tennessee, and Mississippi)

Supervising Grand Officer: G. S. and T. A. Richard Bliss, Jr.

Satrap: Karl Wood, Exchange Bldg., Memphis, Tenn.

Secretary: J. C. Moore, Jr., P.O. Box 90, Topelo, Miss.

## PROVINCE VIII

(Chapters in Alabama and Louisiana)

Supervising Grand Officer: G. S. and T. A. Richard Bliss, Jr.

Satrap: E. W. Gibbs, Thomas Jefferson Drug Co., Birmingham, Ala.

Secretary: W. C. Forbes, c/o Doster-Northington Co., Birmingham, Ala.

## PROVINCE IX

(Chapters in Chicago, Valparaiso, and Madison, Wis.)

Supervising Grand Officer: Grand Ritualist L. Templeton

Satrap:

Secretary:

## PROVINCE X

(Chapters in Fargo, N.D., and Minneapolis)

Supervising Grand Officer: Grand Ritualist L. Templeton

Satrap: G. E. Crossen, St. Paul, Minn.

Secretary: Jas. G. Guertin, Fargo, N.D.

## PROVINCE XI

(Chapters in Lawrence, Lincoln, Omaha, and Des Moines)

Supervising Grand Officer: Grand Ritualist L. Templeton

Satrap: J. L. Dietz, Omaha, Neb.

Secretary: E. L. Griffith, Des Moines, Iowa.

## PROVINCE XII

(Chapters in Norman, Dallas and Austin, Tex.)

Supervising Grand Officer: G. S. and T. A. Richard Bliss, Jr.

Satrap: R. A. Beegle, School of Pharmacy, Norman, Okla.

Secretary: W. R. Neville, Jr., College of Pharmacy, Austin, Tex.

## PROVINCE XIII

(Chapters in Corvallis and Portland, Ore.)

Supervising Grand Officer: Grand Counselor A. O. Mickelsen

Satrap: Dr. F. D. Grill, 809 N. E. Oregon St., Portland, Ore.

Secretary: H. T. Hayek, 3631 S.E. Hawthorne St., Portland, Ore.

## PROVINCE XIV

(Chapters in Missoula, Mont., Pullman and Seattle, Wash.)

Supervising Grand Officer: Grand Vice Regent C. E. Mollett

Satrap: W. H. Clausen, 7718 Seward Pk., Seattle, Wash.

Secretary: J. H. McCullough.

## PROVINCE XV

(Chapters in San Francisco and Los Angeles, Calif.)

Supervising Grand Officer: Grand Counselor A. O. Mickelsen

Satrap: G. H. Frates, 809 Flood Bldg., San Francisco, Calif.

Secretary: R. J. Whidden, Los Angeles, Calif.

## CHAPTER ROLL

(Chapters Strictly Limited to Recognized Schools of Pharmacy.)

Total Chapters: 86

Collegiate Chapters: 51

Graduate Chapters: 35

## COLLEGIATE CHAPTERS

Gamma.....Columbia University, New York, N.Y.  
Gerard Van Beuren, Jr., 115 W. 68th St., SecretaryEpsilon.....University of Minnesota, Minneapolis, Minn.  
T. Kretzschmar, Col. of Phar., Secretary

- Eta.....Philadelphia College of Pharmacy, Philadelphia, Pa.  
A. Ramelowicz, 4213 Chester Ave., Secretary
- Theta.....Medical College of Virginia, Richmond, Va.  
P. J. Evans, 1 W. Grace St., Secretary
- Iota.....Medical College of S. C., Charleston, S.C.  
(Dormant)
- Kappa.....Birmingham College of Pharmacy, Birmingham, Ala.  
(School discontinued)
- Lambda.....Baylor University, Dallas, Tex.  
(School discontinued)
- Mu.....Massachusetts College of Pharmacy, Boston, Mass.  
R. D. Merchant, 220 Aspinwall Ave., Secretary
- Mu Omicron Pi.....Detroit College of Pharmacy, Detroit, Mich.  
A. J. Jackson, c/o College, Secretary
- Nu.....Connecticut College of Pharmacy, New Haven, Conn.  
T. Poreda, 150 York St., Secretary
- Xi.....Ohio State University, Columbus, Ohio.  
(Dormant)
- Omicron.....Vanderbilt University, Nashville, Tenn.  
(School of Pharmacy discontinued)
- Pi.....Purdue University, School of Pharmacy, W. LaFayette, Ind.  
M. W. McKinney, 635 N. Grant St., W. Lafayette, Secretary
- Rho.....University of Kansas, Lawrence, Kan.  
R. T. Pokorny, 1206 Tennessee St., Secretary
- Sigma.....University of Maryland, Baltimore, Md.  
G. I. Young, Jr., 15 Montrose Ave., Cantonville, Secretary
- Tau.....University of Southern California, Los Angeles, Calif.  
(Dormant)
- Upsilon.....Louisville College of Pharmacy, Louisville, Ky.  
F. D. Stoll, 104 W. Chestnut St., Secretary
- Phi.....Northwestern University, Chicago, Ill.  
(School of Pharmacy discontinued. Merged with Chi.)
- Chi.....University of Illinois, Chicago, Ill.  
H. E. Rupe, 614 S. Ashland Blvd., Secretary
- Psi.....University of Tennessee, Memphis, Tenn.  
W. S. Havron, 144 N. Bellevue, Secretary
- Omega.....College of Pharmacy, Rutgers University, Newark, N.J.  
D. Fusilli, c/o College of Pharmacy, Secretary
- Beta-Beta.....Western Reserve University, Cleveland, Ohio.  
R. W. Marquand, 2298 Murray Hill Rd., Secretary
- Beta-Gamma.....University of California, San Francisco, Calif.  
G. McCauley, 5534 Misson St., Secretary
- Beta-Delta.....Union University, Albany, N.Y.  
M. Allard, c/o College of Pharmacy, Secretary
- Beta-Epsilon.....Rhode Island College of P. & S., Providence, R.I.  
c/o R.I. Col. of P. & A. S., Secretary
- Beta-Zeta.....Oregon State College, Corvallis, Ore.  
Dr. F. A. Gilfillan, Secretary
- Beta-Eta.....University of West Virginia, Morgantown, W.Va.  
(Dormant)
- Beta-Theta.....Tulane University, New Orleans, La.  
(School discontinued.)
- Beta-Iota.....North Pacific College of Oregon, Portland, Ore.  
Dr. F. R. Grill, c/o College, Secretary
- Beta-Kappa.....University of Pittsburgh, Pittsburgh, Pa.  
E. Bradel, 258 E. Bellefield Ave., Secretary
- Beta-Lambda.....University of City of Toledo, Toledo, Ohio.  
J. Redecki, c/o U. of T., Secretary



- Beta-Mu.....Valparaiso University, Valparaiso, Ind.  
(School of Pharmacy discontinued June, 1939.)
- Beta-Nu.....Creighton University, Omaha, Neb.  
(Dormant)
- Beta-Xi.....University of North Carolina, Chapel Hill, N.C.  
J. E. Hamlet, 204 Short St., Secretary.
- Beta-Omicron.....University of Washington, Seattle, Wash.  
(Dormant)
- Beta-Pi.....Washington State College, Pullman, Wash.  
E. S. Brooks, 505 Colorado Ave., Secretary.
- Beta-Rho.....University of Mississippi, University, Miss.  
W. W. Johnson, University, Secretary.
- Beta-Sigma.....North Dakota State College, Fargo, N.D.  
J. Bjornson, c/o College, Secretary.
- Beta-Tau.....Marquette University, Milwaukee, Wis.  
(College of Pharmacy Discontinued.)
- Beta-Upsilon.....Indianapolis College of Pharmacy, Indianapolis, Ind.  
E. F. Kaminski, 430 N. Meridian Ave., Apt. 6, Rm. 7, Secretary.
- Beta-Phi.....Cincinnati College of Pharmacy, Cincinnati, Ohio.  
F. Redding, 210 W. 8th St., Secretary.
- Beta-Chi.....Drake University, Des Moines, Iowa  
L. W. Eyster, 658 14th Pl., Secretary.
- Beta-Psi.....University of Wisconsin, Madison, Wis.  
c/o Dean Uhl,
- Beta-Omega.....Temple University, Philadelphia, Pa.  
E. G. Braun, 544 N. 10th St., Reading, Pa., Secretary.
- Gamma-Gamma.....University of Texas, Austin, Tex.  
(Dormant)
- Gamma-Delta.....Ohio Northern University, Ada, Ohio.  
T. D. Bennett, 219 E. College Ave., Secretary.
- Gamma-Epsilon.....University of Nebraska, Lincoln, Neb.  
(Dormant)
- Gamma-Zeta.....Howard College, Birmingham, Ala.  
J. R. Warren, 7772 2nd Ave. S., Secretary.
- Gamma-Eta.....University of Montana, Missoula, Mont.  
J. E. Crnich, 431 Daly Ave., Secretary.
- Gamma-Iota.....University of Buffalo, Buffalo, N.Y.  
J. L. Maid, 181 Winspear Ave., Secretary.
- Gamma-Omicron.....University of Oklahoma, Norman, Okla.  
R. R. Shaw, 315 E. Keith St., Secretary.

## GRADUATE CHAPTERS

- Philadelphia.....Philadelphia, Pa.  
Dr. I. Griffith, Stetson Hospital, Philadelphia, Pa., Secretary.
- New York.....New York, N.Y.  
W. E. Sowersby, 671 Gramatan Ave., Mt. Vernon, N.Y.
- Baltimore.....Baltimore, Md.  
Dr. M. J. Andrews, c/o U. of Md., Lombard and Green Sts., Secretary.
- Birmingham.....Birmingham, Ala.  
Murphree Davis, c/o Doster-Northington Drug Company, Secy.
- Chicago.....Chicago, Ill.  
M. H. Seifert, P. O. Box 55, Wilmette, Ill., Secretary.
- Boston.....Boston, Mass.  
G. F. Archambault, 179 Longwood Ave., Secretary.
- Albany.....Albany, N.Y.  
K. G. Haggerty, 30 Dana Ave., Secretary.



Providence.....	Providence, R.I.
Dr. E. H. Mason, 750 East Ave., Pawtucket, Secretary.	
San Francisco.....	San Francisco, Calif.
Hugh D. Moncur, Jr., 278 Post St., Secretary.	
Cleveland.....	Cleveland, Ohio.
C. A. Young, 543 Fairchild Ave., Kent, Ohio, Secretary.	
North Carolina.....	Chapel Hill, N.C.
Prof. J. C. Beard, Chapel Hill, N.C., Secretary.	
Nashville.....	Nashville, Tenn.
J. W. Greener, 416 Russel St., Secretary.	
Memphis.....	Memphis, Tenn.
Wiley Robinson, 1229 Vinton Ave., Secretary.	
Richmond.....	Richmond, Va.
Prof. W. G. Crockett, c/o College of Pharmacy, Med. Col. of Va.,	
South Carolina.....	Charleston, S.C.
Dr. A. E. Butler, 47½ Columbus St., Secretary.	
Brooklyn.....	Brooklyn, N.Y.
H. A. Krumwiede, 17 Columbia Heights, Secretary.	
Portland.....	Portland, Ore.
Herbert T. Hayek, 128 N.E. 7th Ave., Secretary.	
Florida.....	St. Petersburg, Fla.
W. H. Childs, Box 1173, Secretary.	
Kentucky.....	Louisville, Ky.
Prof. F. D. Stoll, c/o College of Pharmacy, Secretary.	
West Virginia.....	Shinnston, W.Va.
R. S. Johnson, Shinnston, W.Va., Secretary.	
Mississippi.....	Corinth, Miss.
J. A. Williams, Booneville, Miss., Secretary	
Omaha.....	Omaha, Neb.
F. L. Schmitz, 4720 N. 31st Ave., Secretary.	
Milwaukee.....	Milwaukee, Wis.
A. H. Hackendahl, 784 Jackson St., Secretary.	
New Jersey.....	Newark, N.J.
G. Mittermann, Jr., 815 Rebecca Pl., Elizabeth, N.J., Secretary.	
Buffalo.....	Buffalo, N.Y.
Dr. G. L. Barone, c/o College of Pharmacy, Secretary.	
North Dakota.....	Fargo, N.D.
G. L. Cook, 1129 Fourth St. N., Secretary.	
Los Angeles.....	Los Angeles, Calif.
Lonnie R. Vincent, 4238 LaSalle.	
Seattle.....	Seattle, Wash.
Dr. H. A. Langehan, c/o Univ. of Wash., College of Pharmacy	
Cincinnati.....	Cincinnati, Ohio.
Elwood Fahl, 4228 Tower Ave., St. Bernard, Ohio, Secretary.	
Harrisburg.....	Harrisburg, Pa.
J. B. Pilchard, 321 State Theatre Bldg., Secretary.	
Connecticut.....	New Haven, Conn.
Peter DeStefano, 75 College St., Secretary.	
Toledo.....	Toledo, Ohio.
R. E. Knowles, 1629 Homestead St.	
Pittsburgh.....	Pittsburgh, Pa.
R. Mierzwa, Secretary, 4724 Liberty Ave.	
Detroit.....	Detroit, Mich.
C. M. Neuman, 119 Tennyson Ave., Highland Park, Mich., Regent.	
Raleigh.....	Raleigh, N.C.
J. C. Brantley, Jr., Masonic Temple Bldg., Secretary	
Columbus.....	Columbus, Ohio
R. L. McMurray, c/o College of Pharmacy	

# KAPPA PSI PHARMACEUTICAL FRATERNITY

When  
ordering  
Mention  
Item No.

**OFFICERS' SASHES:** Set of 12, all of adopted regulation patterns, and edged with silk braid, with correct emblem embroidered in golden yellow silk on each, as follows:

- 1 1 only Scarlet Sash of fine satin, golden yellow braid, emblem "A."
- 2 11—grey Sashes of flannel, scarlet braid, emblems, one each as follows: Greek letter Omega, Palm 99, Short Greek Sword, Shield and Wreath, Crossed Long Greek Swords, Crossed Short Spears, Crossed Pens, Crossed Keys, Mask, Eye, Greek letters Kappa Psi.
- 3 Sashes of any of above—each \$3.30, per set of 12 .....\$35.75
- 5 **MEMBERS' COLLARS:** (Optional) Lined and interlined, cadet grey flannel, scarlet silk braid on both edges, no emblems. Each \$1.95, per dozen .....\$19.50

**MEMBERS' ROBES:** (Optional) Loose fitting, plain draped gowns with hood and cotton cord waist girdle all of solid black with double facing bands of scarlet sateen down front, each decorated with a scroll design worked in narrow silk braid (soutache) of grey on the scarlet facing.

- 10 Cambric, trimmed with sateen, any quantity, each .....\$5.95
- 11 Cotton cashmere, any quantity, each .....\$6.60  
Or same as above with the gray soutache scroll design omitted.
- 14 Cambric, trimmed with scarlet sateen, any quantity, each .....\$4.95
- 15 Cotton Cashmere, with scarlet sateen, any quantity, each .....\$5.85
- 18 **SQUARE** (4 sided) (1 required) wooden, painted alternating colors Scarlet and gray, each .....\$2.50

**SPEARS:** (2 required) Each with seasoned shaft.

- |       |    |   |          |
|-------|----|---|----------|
| 75721 | 27 | Gilt bronzed wooden point and ball, each \$1.75 | Pr. 3.50 |
| 75722 | 28 | Polished brass point and ball ..... each 2.00   | Pr. 4.00 |
| 75723 | 29 | Nickel plated metal point and ball, each 2.20   | Pr. 4.40 |
| 75725 | 30 | Nickel plated metal point and ball, each 2.20   | Pr. 4.40 |

Order from: **IHLING BROS.-EVERARD CO.**  
KALAMAZOO, MICHIGAN  
Sole Manufacturer of K Ψ Regalia

# KAPPA PSI PHARMACEUTICAL FRATERNITY

	Item Nos.		
		<b>GRECIAN SHORT SWORD:</b> (1 required)	
75752	31	Leather scabbard, Grecian hilt, steel blade, brass mounted handle and trimming—with stud for belt throg .....	each, \$6.95
		<b>BELT,</b> for Sword: (1 required)	
75761	33	Shoulder sling style—heavy webbing, leather throg .....	each, \$1.30
75762	34	Shoulder sling style—all leather .....	each, 2.00
40995	35	Waist belt style—heavy leather 1¾" wide, plain metal plate, leather throg (advise color black, brown, red) .....	each, 3.50
		<b>BALLOT BOX</b> (1 required) Exclusive of ballots (See next item)	
82714	37	Full secret swan neck pattern, walnut .....	each, 9.90
82715	38	Full secret, hinged lid pattern, quartered oak ..	each, 3.90
82713	39	Semi-secret, oak .....	each, 2.00
		<b>BALLOTS:</b> 50 assorted black and white.	
82722A	41	China, glazed, per set of 50 .....	.25
82722C&D	42	Rubber—noiseless—black cubes, white balls, per set of 50 .....	.80
		<b>Gavels:</b> (4 Required)	
82729	45	Oak .....	each, .60, per set of 4 ....2.40
82730	46	Walnut .....	each, 1.00, per set of 4 ....4.00
82731	47	Rosewood .....	each, 1.85, per set of 4 ....7.40
		<b>HOODWINK:</b> (1 required) Each equipped with strap to adjust size, and spring attachment to effect quick removal or replacement.	
82701	50	Leather, velvet lined, metal eye caps are permanent .....	each, 2.25
82702	51	Similar to 75799 but metal eye lids can be turned open, permitting clear vision without removing hoodwink .....	each, 2.50
75802	52	Special pattern—permits clear view, or shows through red lens, or shuts out light completely .....	each, 3.00
		<b>CHAPTER SEAL</b> —Heavy lever stand.	
	55	Circular die, 1¾ inch diameter, plain lettering, no emblem or Greek characters .....	5.75
	56	Circular die, 2 inch diameter, plain lettering, no emblem or Greek characters .....	6.00

Order from: **IHLING BROS.-EVERARD CO.**

**KALAMAZOO, MICHIGAN**

Sole Manufacturer of K Ψ Regalia





Copyrighted by Kappa Psi Pharmaceutical Fraternity

SEND ALL ORDERS DIRECT TO THE OFFICIAL JEWELER,  
L. G. BALFOUR CO., ATTLEBORO, MASS.

*Note:* No Federal Tax on articles selling for less than \$41.50

## New Price List: Kappa Psi Badges and Guards

PLAIN, polished or Roman, beveled border; or chased or nugget border; with two rubies in the eyes of Mask .....\$ 4.50

### CROWN SET BADGES:

Whole Pearls, Opals or Garnets (or any combination of these alternately or in corners) .....	12.75
Whole Pearls with Ruby corners .....	13.75
Whole Pearls with Emerald corners .....	16.00
Whole Pearls with Diamond corners .....	22.50
Whole Pearls and Rubies alternately .....	17.50
Whole Pearls and Emeralds alternately .....	19.75
Whole Pearls and Diamonds alternately .....	33.50
Emeralds and Diamonds alternately .....	37.50
Rubies and Diamonds alternately .....	35.00
Emeralds with Diamond corners .....	27.50
Rubies with Diamond corners .....	25.00
Diamonds with Emerald corners .....	50.00
Diamonds with Ruby corners .....	47.50
Diamonds, entire .....	60.00

Sapphire mounting, same prices as rubies.

### Both eyes of Mask set with—

Brilliant Cut Diamonds, extra cost .....	12.00
Rose Diamonds, best quality, extra cost .....	6.00

Platinum Setting: \$25.00 additional. 18K White Gold: \$5.00 additional.

### CHAPTER GUARDS:

	Small	or Medium	Large
Single Letter—Plain Gold .....	\$ 2.75		\$ 3.00
Close set pearl .....	4.50		5.50
Crown set pearl .....	6.00		7.50
Double Letter—Plain gold .....	4.00		4.50
Close set pearl .....	7.50		8.50
Crown set pearl .....	11.00		13.50

Additional price per stone

Rubies, \$0.53

Emeralds, \$0.79

Diamonds, \$3.15

The Fraternity coat-of-arms with safety clasp and guard chain attachment may be had if preferred. They are furnished in gold in the miniature size at \$2.75 or the medium size at \$3.25.

18K White Gold ..... \$2.63 additional

Platinum Settings—Single Letter ..... 5.25 additional

Platinum Settings—Double Letter ..... 10.50 additional

All jewels are carefully selected and matched and of brilliant cut. The badges are provided with safety catches. Three initials and chapter letters will be engraved on the backs free of charge IF cash accompanies order. All badges are made with the Mask raised in gold and a ruby inserted in each eye.

PLEDGE BUTTONS will be furnished for 60c apiece. Each chapter should have a supply of these buttons on hand as the property of the chapter.

RECOGNITION BUTTONS, 75c each.

WALL PLAQUES: Insignia or Coat-of-arms in bronze, \$5.50 each.

### IMPORTANT

SEND ALL ORDERS TO THE OFFICIAL KAPPA PSI JEWELER—THE L. G. BALFOUR CO., ATTLEBORO, MASS., AND A DUPLICATE ORDER TO THE CENTRAL OFFICE.

# SATISFACTION



and Pride of Possession comes in knowing that the QUALITY and the design of your purchase is the BEST that your budget affords. The L. G. Balfour Company makes and sponsors articles in every price field—you are assured that orders placed with your official jeweler protect your insignia and give you maximum value.

## *The Balfour Guarantee—*

- 1, That Balfour made merchandise is exactly as represented.
- 2, That it represents the best value for the price paid and thus insures complete satisfaction.
- 3, That your money will be refunded should merchandise fail to meet full specifications and your satisfaction.



WRITE TODAY FOR YOUR COPY OF  
THE BALFOUR BLUE BOOK  
FREE

Mailed postpaid—Mention Your Fraternity



Buy with complete confidence from  
SOLE OFFICIAL JEWELER TO  
KAPPA PSI

L. G. **BALFOUR**

**COMPANY**

ATTLEBORO,

MASSACHUSETTS

In Canada visit your nearest BIRK'S Store

GEORGE BANTA PUBLISHING COMPANY, MENASHA, WISCONSIN