

THE MASK

OF KAPPA PSI
PHARMACEUTICAL
FRATERNITY



In Memory of
DR. W. BRUCE PHILIP, Γ, B-Γ
Past Grand Regent
and
SIR HENRY S. WELLCOME
Initiate of Alpha

1936 National Convention Announcement

July, 1936

THE MASK

of Kappa Psi Pharmaceutical Fraternity

Established in 1904

Official Organ of Kappa Psi Pharmaceutical Fraternity
of the U. S. of America

A Quarterly Magazine maintained and published in the Interests of the Fraternity,
College, and University. Published during the months of January, April,
July, and November by George Banta, Official Printer and Publisher,
450 to 454 Ahnaip Street, Menasha, Wisconsin. Life
subscription \$10.00; single copies 25¢
yearly subscription \$1.00

EDITORIAL BOARD

Dr. A. R. Bliss, Jr., (Γ), Editor-in-Chief.. East Lake Sta., Box 7, Birmingham, Ala.
Dr. H. A. Langenhan, (Φ).....Univ. of Wash., Seattle, Wash.
Dr. Ivor Griffith, (H).....P. C. P., Philadelphia, Pa.
Dr. A. H. Brundage, (B-Γ).....9312-91st Ave., Woodhaven, N.Y.
Dr. H. J. Goeckel, (Γ).....191 Lehigh St., Cranford, N.J.
Dr. F. C. Grill, (B-I).....N. P. C. of Ore., Portland, Ore.
Dr. H. W. Youngken, (H, M).....M. C. P., Boston, Mass.
Dr. P. H. Dirstine, (B-II).....Wash. State College, Pullman, Wash.
Dean J. C. Beard, (B-Ξ),U. N. C., Chapel Hill, N.C.
Dr. D. S. Crockett (Θ).....M. C. Va., Richmond, Va.
Dean W. F. Gidley, (Γ-I).....U. of T., Austin, Texas
Dr. A. G. Du Mez, (Σ).....U. of Md., Baltimore, Md.
Dr. H. H. Schaefer, (Γ).....115 W. 68th St., New York, N.Y.
Dean Geo. Schicks, (Ω).....Rutgers Univ., Newark, N.J.
Dean H. S. Johnson, (N).....C. C. P., New Haven, Conn.
Dr. J. H. Bacon, (B-B).....W. R. U., Cleveland, Ohio
Dr. A. J. Jongward, (B-Σ).....N. D. S. C., Fargo, N.D.
F. B. Holt, (N).....Mitchell Ave., Cheshire, Conn.

VOL. XXXIII, No. 3

JULY, 1936

WHOLE NUMBER 135

C o n t e n t s

W. Bruce Philip	35
Sir H. S. Wellcome	37
Editorials:	
Letter to Mrs. W. Bruce Philip	40
Our Loss	41
1936 National Convention	41

THE MASK

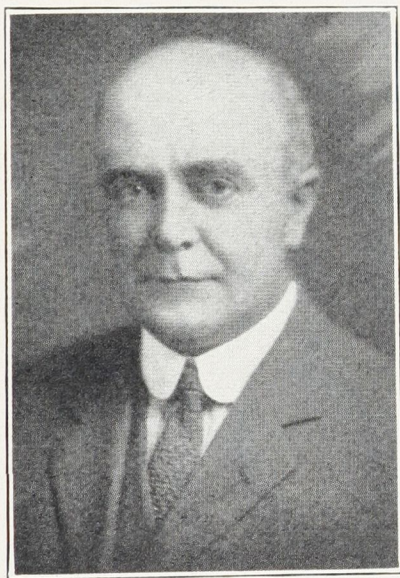
VOL. XXXIII, No. 3

JULY, 1936

WHOLE NUMBER 135

DR. W. BRUCE PHILIP, GAMMA AND BETA-GAMMA Grand Counselor and Past Grand Regent

Waldemar Bruce Philip, 80th president of the American Pharmaceutical Association, Grand Counselor of Kappa Psi and Past Grand Regent, died in San Francisco, July 13, 1936, aged 58 years, following



DR. W. BRUCE PHILIP
Gamma and Beta-Gamma

an illness during the greater part of a year. Several months ago Dr. and Mrs. Philip returned to California hoping to come back to Washington after the former's restoration to health. However, it was otherwise decreed and the members of the Fraternity are saddened by the passing of one of their most beloved, gifted and brilliant associates. Bruce was always ready to serve in the interests of pharmacy and of Kappa Psi, and all sympathize with the widow and other members of the bereaved family.

As president of the A. Ph. A., Dr. Philip presided at the Madison Meeting, and shared with Chairman S. L. Hilton the direction of the

ceremonies, on May 9, 1934, of the laying of the corner-stone of the American Institute of Pharmacy in Washington, D.C.

Waldemar Bruce Philip was born in Sacramento, California, July 19, 1878. His mother died when he was three years old, and Bruce was placed in care of a friend of the family until, nine years later, when his father remarried, he returned to the family hearth. The youth attended the grammar and high schools of Sacramento, and during part of this period Bruce had a carrier's route for the daily *Sacramento Record Union*. His contact with Dr. C. A. Miller instilled in him the desire to become a druggist and to secure a college education. He secured drug store employment with O. P. Willis, and later with George Munroe at Fresno. His contact with the personnel of these drug stores and its patrons influenced the ideals of the young man. He had saved enough money to begin his college studies and entered the University of California College of Pharmacy. He secured a drug store position with Dr. Albert L. Stoll in San Francisco. After graduation in pharmacy, Bruce was again employed by his former employer, O. P. Willis, now Willis and Martin, and after a year as employee he became a partner in the pharmacy.

In 1903, Philip entered the College of Pharmacy of Columbia University where he pursued the Doctor of Pharmacy course and, after graduation, he returned to the Sacramento pharmacy. On November 24, 1904, he married Miss Fayette Harris, a classmate at the University of California College of Pharmacy. The February following, the firm of Philip and Philip was organized and established a pharmacy in Fruitvale; later two branch stores were opened. These three stores prospered, but the two branch stores were disposed of when Dr. Philip moved to Washington, D.C. The Alameda County Association and San Francisco Retail Druggists' Association were organized at Dr. Philip's suggestion, and they have functioned in the interests of the members, and to benefit of pharmacists in other sections of the state and country.

The Hastings College of Law, of the University of California, was organized in 1920. Dr. Philip matriculated, graduated with the LL.B. degree, and was admitted to the bar. He lectured and instructed in commercial pharmacy and pharmacy laws at the University for a decade. He was elected Grand Regent of Kappa Psi Pharmaceutical Fraternity and served in that capacity for a number of terms. *THE MASK*, of April, 1931, carried an interesting and comprehensive account of the services rendered to pharmacy and to Kappa Psi. A sketch also appeared in the *Journal* of the A. Ph. A. of January 1932. References in these articles are made to Dr. Philip's activities as president of the Alameda County Pharmaceutical Association, as chairman of its legislative and executive committees, as secretary of the latter, and also of the Retail Druggists of San Francisco; he suggested the students' loan funds of the latter organization. He is a former president of San Francisco Secretaries' Club, and a member of several alumni organizations. The Philadelphia College of Pharmacy and Science honored him with the Ph.M. degree,

and the National University, Washington, conferred on him the degree of Master of Law. Dr. Philip was a member of the Board of Trustees, U.S.P. XI. He served as chairman of the House of Delegates, A. Ph. A., vice-chairman of the Council, A. Ph. A. and a member of important committees.

He was vice-president of the National Association of Retail Druggists, a member of important committees and for a number of years its Counsel and Washington representative. He published a *Bulletin* dealing with pharmaceutical legislation and other topics relating to pharmacy and the drug-trade activities.

The funeral ceremonies were attended by hundreds of representatives of the American Pharmaceutical Association, the National Association of Retail Druggists, Veteran Druggists' Association, California State Pharmaceutical Association, Northern California Retail Druggists' Association, Southern California Retail Druggists' Association, Kappa Psi Fraternity, University of California College of Pharmacy, Attorneys' and Drug Clerks' Associations.

Dr. Philip was an initiate of Gamma chapter of Kappa Psi in the College of Pharmacy of Columbia University; later he was the moving spirit in the organization and installation of Beta-Gamma chapter of Kappa Psi in the College of Pharmacy of the University of California. He served as Grand Regent for three terms, refused re-election for a fourth term, and then was unanimously elected Grand Counselor, the national office he held at the time of his untimely death.

SIR H. S. WELLCOME, ALPHA AND ETA

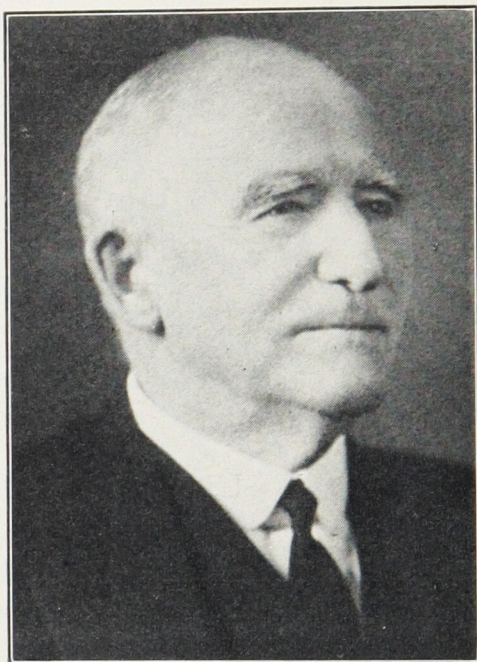
Sir Henry Solomon Wellcome, initiated by Alpha chapter of Kappa Psi during the dedication program of The American Institute of Pharmacy in Washington, D.C., in May, 1934, and the scientist who was born near Milwaukee and became a princely benefactor of British medical research, died in London, England, on July 25, 1936, after an operation, at the age of 82.

Born in a log cabin in a frontier settlement in Wisconsin, Henry S. Wellcome, in his long career, came to be one of the world's noted scientists and explorers. As a boy of 6 he held a basin while his uncle, Dr. J. W. B. Wellcome, dressed the wounds of Minnesota pioneers who had been in battle with the Indians. After the World War, during the course of which he became a British subject by naturalization, he himself pioneered in another field, that of archaeological exploration by airplane.

Knighted in 1932 by King George for his services to medicine and pharmaceutical development, Sir Henry was the founder of the Wellcome Research Institution in London, the Wellcome Historical Medical Museum and the Wellcome Bureau of Scientific Research. He also founded, in 1927, the Lady Stanley Maternity Hospital and, earlier, the Wellcome Medical Hospital Dispensary in Uganda, Central Africa, both

being under the control of the Medical Mission of the Church Missionary Society.

He was himself the son of an itinerant missionary, the Rev. S. C. Wellcome, who with Sir Henry's mother, Mary Curtis Wellcome, traveled and preached in a covered wagon in Wisconsin and Minnesota. Sir Henry served as a drug clerk in Rochester, Minn., from 1868 to 1871 and always attributed his success in after life to the interest of Dr. William W. Mayo, father of the Mayo brothers of Rochester. The elder Dr. Mayo



SIR HENRY S. WELLCOME
Alpha and Eta

arranged for the matriculation of young Wellcome at the Philadelphia College of Pharmacy which was to lead to his eventual establishment of a business with world-wide ramifications.

Sir Henry became the head of Burroughs, Wellcome and Company of London, manufacturers of chemicals, with establishments in the United States, Italy, Canada, Australia, India, China and other countries. His American interests were wide and varied.

Knowing the American Indian from first-hand contact as a boy, Sir Henry maintained his interest in the Red Man. For many years he took a close interest in the welfare of a tribe of Indians in Alaska and in 1887 published a book of 500 pages on this tribe under the title, "The Story of Metlakahtla." Archaeological interests, which were later to receive world-wide recognition, were also roused in Sir Henry by his early experiences.

Sir Henry's interest in preventive medicine reached to all corners of the world. He was past honorary president of the American Pharmaceutical Association, to which he had belonged since 1875. He received its Remington Honor Medal in 1934.

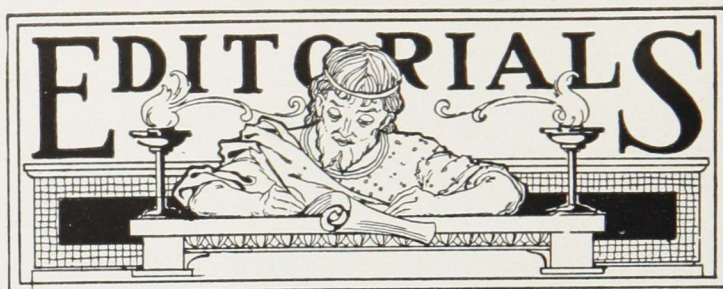
He was also a member of the American Oriental Society and an honorary member of the American Society for Tropical Medicine and of the Association of Military Surgeons of the United States. He was vice-president of the Royal Anthropological Institute; vice-president and member of council, Royal Society of Arts; fellow of the Royal Society of Medicine and Royal Society of Tropical Medicine and Hygiene, London; corresponding member of the Ancient College of Doctors of Medicine of Madrid.

Sir Henry was fellow of the Society of Antiquaries, Royal Geographical Society, Zoological Society, a member of the Royal Institution, the executive committee of the governing board, Gordon Memorial College, Khartoum, and honorary vice-president of the Society for Nautical Research, London.

He held the Cross of Chevalier of Legion of Honor and was a Freeman of the Ancient Worshipful Society of Apothecaries of the City of London. In 1928 he received the honorary degree of Doctor of Laws from Edinburgh University. In 1895 he received the life-saving medal awarded by the Royal Humane Society.

It was during the meetings of the American Pharmaceutical Association, and associated societies in Washington, D.C., in May, 1934, that Alpha Chapter voted to confer the honor of membership in Kappa Psi on Sir Henry, a graduate of the Philadelphia institution in which Eta Chapter has been carrying on for so many years. Sir Henry was one of the special guests at the dedication exercises of The American Institute of Pharmacy, the feature of that year's meetings. Dr. W. Bruce Philip, then Grand Regent of Kappa Psi, and Dr. A. Richard Bliss, Jr., Grand Secretary and Treasurer, were delegated to call on Sir Henry, inform him of the action of Alpha Chapter, and, in the event he accepted the honor, to make him a member of Kappa Psi "at sight." Sir Henry was most gracious in his acceptance of membership in Kappa Psi, and informed the representatives of Kappa Psi that he looked upon this Kappa Psi honor as one of the greatest which had come to him.

All members of Kappa Psi are grieved over the loss of Brother Sir Henry, one of the most noted scientists and benefactors the world has ever known.



KAPPA PSI PHARMACEUTICAL FRATERNITY

Central Office
Birmingham

July 28, 1936.

*Mrs. W. Bruce Philip,
Oakland,
California.*

DEAR MRS. PHILIP:

We were shocked and sorely grieved today when we read a news item in *Drug Topics* announcing the sudden death of your husband, our beloved and esteemed Brother W. Bruce Philip.

Please accept our sincere and heartfelt sympathies as individuals and as a group composing the Fraternity your husband loved so well and did so much for.

Those of us fortunate enough to know him personally loved and honored him. He was indeed a BROTHER, a friend; as wise, understanding, sympathetic and helpful as mortal man can be. We shall sadly miss him from our Councils and our informal gatherings, where he was always cheerful in spite of things depressing, optimistic in spite of the pessimists, encouraging in spite of disappointments, and above all else loyal to his friends and to his Fraternity. Kappa Psi as an organization, and many of us as individuals, owe much to our true Brother "Bruce."

Although we shall miss him greatly as Counsellor, as Friend, as Comrade, and as Brother, his memory shall always remain with us, and his splendid example shall continue to serve as a stimulus to greater efforts for the Brotherhood of Man and the Fatherhood of God.

Sincerely yours,

KAPPA PSI PHARMACEUTICAL FRATERNITY

By

A. R. Bliss, Jr.,
G. S. & T.

Elsewhere in this issue appear announcements of the deaths of two of Kappa Psi's most distinguished members—Doctor W. Bruce Philip (Gamma and Beta-Gamma), Grand Counselor, and Past **Our Loss** Grand Regent of our Order, and Sir Henry Solomon Wellcome, initiate of Alpha Chapter, and, consequently, a graduate initiate of Eta Chapter of the Philadelphia College of Pharmacy and Science, of which Sir Henry was a graduate. These announcements give all-too-brief stories concerning the histories and the achievements of these two Kappa Psi Brothers of ours, but they suffice to show the striking caliber of two Kappa Psis who became leaders in their specialized fields and benefactors to their fellowmen, and to serve as brilliant examples for our younger brethren to pattern their own lives after. Both of these brothers began life in relatively modest circumstances, but ambition, enthusiasm, intelligence, and a *willingness to work* carried them to goals which comparatively few in this life ever attain. The memories of "Bruce" Philip and of "Sir Henry" will linger forever as shining lights in Kappa Psi's glorious history of advancement and achievement. Our sincerest sympathies go out to the members of the families of these our departed and beloved brothers.

As officially announced in the April 1936 issue of THE MASK, the decision of the chapters in the matter of a National Convention for 1936 placed the time for such a meeting during the customary, and, to the majority, the most convenient season of the year, the Christmas holidays of 1936.

After all, Kappa Psi is primarily a Fraternity of Pharmacy STUDENTS still in school, and although many of the "Old Grads," who would like to attend a national convention, find that time of year "inconvenient" (in the cases of those out in "the battle of pharmaceutical life," what would be the common "most convenient time of year?!!!"), the active members—the boys who constitute the actual foundation of our order—the boys who are "paying the bills"—the boys without whom there would be no "Kappa Psi," are the fellows who should be given consideration. The student members of Kappa Psi cannot afford, from a scholastic angle, to absent themselves from classes to attend a National Convention. The overwhelming majority have voiced their preference for a convention during the only period of the college year when their fellows can get away without penalty—a period which will permit even those farthest from a convention city to get to the meeting in time and to return home for the reopening of classes after the Christmas holidays. On two occasions the time of year which appeals most to many of us among the "Old Grads"—during the meetings of the A. Ph. A.—has been "voted down" by the active, collegiate membership. We can understand and sympathize with this viewpoint, and gracefully acquiesce to the desires of the boys who "make the wheels go round." We recognize, too, the great advantage of a "during-the-

session" convention; viz., the fact that the collegiate delegates go back immediately to their chapters full to the brim with enthusiasm, and, what is more important, with detailed, correct and clear recollections of what actually took place at the convention to pass on "first-hand" to the rest of the members of the collegiate chapters.

We have gone very carefully into the matter of the most central and economical meeting place for the 1936 National Convention of Kappa Psi. "Most central and economical," because the collegiate membership as a group meet the transportation expenses of the collegiate delegates. Others pay their own expenses. We have contacted chambers of commerce, railroads, and hotel authorities, and the "dollars and cents" facts demonstrate conclusively that St. Louis, Missouri, and the Coronado Hotel meet our "specifications" the best; i.e., **St. Louis** is the most central geographical point for Kappa Psi to meet in, and the **Coronado Hotel** the most "reasonable" of the St. Louis hotels for our convention headquarters. The dates which have been chosen, with a view of permitting everybody to be at home on Christmas Day and back at school the first day of re-opening after the holidays, are **Tuesday and Wednesday, December 29 and 30**. This represents a two-day meeting primarily of business, with one or two inexpensive entertainment events. It is anticipated that everybody will be able to leave for home on the evening of Wednesday, December 30, or the very early morning hours of the 31st at the latest, depending, of course, on individual train schedules. This plan allows three full days (December 26, 27, and 28) for arrival, and four full days for return, since none of the schools reopen before Monday, January 4, 1937.

Further detailed information and instructions concerning the 1936 National Convention will be sent to the Regent of *every* chapter, national officers and national committeemen at a very early date, along with the required preconvention forms, etc. Here's hoping that the 1936 National Convention will be the "greatest ever." Needless to say, chapters must be in good standing for the period October 1936 through December 31, 1936, to be entitled to send delegates to this meeting. Let us begin such preparations now!



Copyrighted by Kappa Psi Pharmaceutical Fraternity

SEND ALL ORDERS DIRECT TO THE OFFICIAL JEWELER,
L. G. BALFOUR CO., ATTLEBORO, MASS.

Note: No Federal Tax on articles selling for less than \$41.50

New Price List: Kappa Psi Badges and Guards

PLAIN, polished or Roman, beveled border; or chased or nugget border; with two rubies in the eyes of Mask\$ 4.25

CROWN SET BADGES:

Whole Pearls, Opals or Garnets (or any combination of these alternately or in corners)	12.25
Whole Pearls with Ruby corners	13.25
Whole Pearls with Emerald corners	15.50
Whole Pearls with Diamond corners	26.50
Whole Pearls and Rubies alternately	17.00
Whole Pearls and Emeralds alternately	19.25
Whole Pearls and Diamonds alternately	53.00
Emeralds and Diamonds alternately	56.50
Rubies and Diamonds alternately	55.00
Emeralds with Diamond corners	35.50
Rubies with Diamond corners	32.50
Diamonds with Emerald corners	78.00
Diamonds with Ruby corners	77.00
Diamonds, entire	92.00
Sapphire mounting, same prices as rubies.	

Both eyes of Mask set with—

Brilliant Cut Diamonds, extra cost	12.00
Rose Diamonds, best quality, extra cost	6.00
Platinum Setting: \$25.00 additional. 18K White Gold: \$5.00 additional.	

CHAPTER GUARDS:

	Small or Medium	Large
Single Letter—Plain Gold	\$ 2.75	\$ 3.00
Close set pearl	4.50	5.50
Crown set pearl	6.00	7.50
Double Letter—Plain gold	4.00	4.50
Close set pearl	7.50	8.50
Crown set pearl	11.00	13.50

Additional price per stone

Rubies, \$0.53 Emeralds, \$0.79 Diamonds, \$3.15

The Fraternity coat-of-arms with safety clasp and guard chain attachment may be had if preferred. They are furnished in gold in the miniature size at \$2.75 or the medium size at \$3.25.

18K White Gold \$2.63 additional

Platinum Settings—Single Letter 5.25 additional

Platinum Settings—Double Letter 10.50 additional

All jewels are carefully selected and matched and of brilliant cut. The badges are of 14K gold and are provided with safety catches. Three initials and chapter letters will be engraved on the backs free of charge IF cash accompanies order. All badges are made with the Mask raised in gold and a ruby inserted in each eye.

PLEDGE BUTTONS will be furnished for 60c apiece. Each chapter should have a supply of these buttons on hand as the property of the chapter.

RECOGNITION BUTTONS, 75c each.

WALL PLAQUES: Insignia or Coat-of-arms in bronze, \$5.50 each.

IMPORTANT

SEND ALL ORDERS TO THE OFFICIAL KAPPA PSI JEWELER—THE L. G. BALFOUR CO., ATTLEBORO, MASS., AND A DUPLICATE ORDER TO THE CENTRAL OFFICE.

Crested Gifts by Balfour Featured in 1937 Balfour Blue Book

YOUR PARTY REPUTATION

Does it rate an "A" or "C"?

Are your parties the talk of the campus? Why not let us help you plan a Holiday party, a pledge party, or your very formal dance? In the 1937 BLUE BOOK you will find the NEW dance favors which do so much to make your party rate an "A" and be the "Talk of the Campus."

Party Requirements

Invitations

Place Cards

Dance Programs

Party Favors

*Write us for suggestions,
giving full details.*

CHRISTMAS GIFTS . . . There's a fascinating array of NEW gifts in the 1937 BLUE BOOK. Here you will find a strikingly beautiful chrome and black enamel dresser set, a fitted Talon case, or a silver coffee service. To those who are looking for a little remembrance, we suggest a clever compact or a shining gold bracelet.

Send a Post Card Today for Your FREE COPY!

CRESTED STATIONERY for Gifts . . .

One of the most acceptable of gifts is stationery die stamped in gold or silver with the crest.

Write for FREE Stationery Samples

CHRISTMAS CARDS—New and Different . . .

New, exclusive designs feature the Balfour Christmas cards this year. Special cards for individual and for chapter use.

Write for FREE Samples!



Official Jeweler to Kappa Psi

L. G. Balfour Company
ATTLEBORO MASSACHUSETTS



GIFTS That Will Be Found Under Many a Christmas Tree . . .

For a Girl

Stardust Evening Bag of
Gold Mesh and Rhinestones
Page 29

Coral and Silver Compact . . .
Hand-made Decorations
Page 30

Talon Travel Case . . .
Black Enamel Fittings
Page 47

Cloisonne Evening Case . . .
Cigarettes, Lighter, Compact
Page 33

For a Man

Continental Cigarette Case . . .
Chrome and Black Catalin
Page 34

Stirrup Tuxedo Chain
Page 38

Cruiser Travel Case
Pigskin, Oil Silk Lining
Page 41

Zipper Travel Clock
Black Leather Case
Page 40

*Select Your Gifts from the
1937 BLUE BOOK
Write for your FREE COPY!*