

THE

MASK

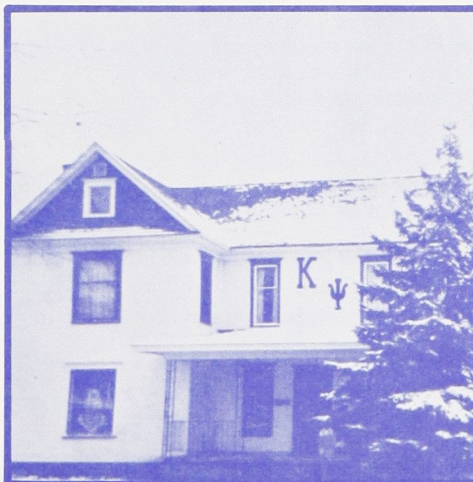
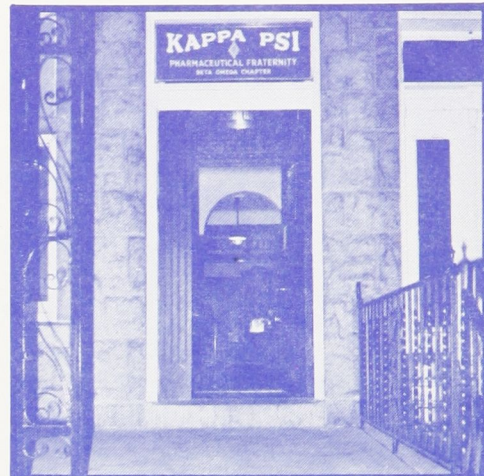
OF

Kappa Psi Pharmaceutical Fraternity



In This Issue

Candidates for Grand Office
Kansas City-Site of the
37th Grand Council
The Great Houses of Kappa Psi



A Quarterly Magazine maintained and published in the interests of the Fraternity, College and University by the Kappa Psi Pharmaceutical Fraternity, 1313 W. Robinhood Drive, Stockton, CA 95207.

Second class postage paid at Stockton CA., and at additional mailing offices. Dr. Donald G. Floriddia, 1313 W. Robinhood Drive, Stockton, CA. 95207.

Frank P. Facione, Editor
2472 Mulberry Rd., Bloomfield Hills, Mi. 48013

William R. Smith, Associate Editor
4337 Frazho Rd. Apt. #104, Warren, Mi. 48091

Steven M. Pepin, Assistant to the Editor
2675 Stillwater Rd., St. Paul, Minn. 55119

James Martin, Assistant to the Editor
1609 Fulton St., Kalamazoo, MI 49001



The Continental . . . Headquarters for your stay

The Management and Staff have made every effort to provide for your every need during the 37th Grand Council. With 300 great-looking rooms, all designed for the individual, you will be sure to have the finest available.

After the day's business, you'll want to relax in the Olympic style pool or perhaps take a steam bath. The health club is your club while at the Continental. For your evening activities, you can stay right inside and enjoy the Playboy Club in the penthouse or the Giraffe, the Continental's own discotheque.

RATES

Single . . \$14.50 Dbl. . \$19.50 Triple . . \$21.50
Quads . . \$28.00 Junior Suites (2 per.) . . \$28.00

On Our Cover:

Nine Great Houses of Kappa Psi;
Top left to right, Chi, Beta Xi,
Beta Omega; Middle left to right,
Gamma Gamma, Gamma Kappa,
Gamma Nu; Bottom left to right,
Gamma Pi, Gamma Chi, and Mu
Omicron Pi/Detroit Graduate
Chapters — See feature article
on page 3

THE

MASK

OF

Kappa Psi Pharmaceutical Fraternity



Table of Contents

From the Desk of the Grand Regent	Page 2
From the Desk of the Executive Secretary	Page 2
Kansas City - Here We Come	Page 2
Great Houses of Kappa Psi	Page 3
Candidates for Grand Office	Page 9
37th Grand Council Convention Program	Page 12

Volume 71, No. 2, Whole Number 285, April-June 1974

View From The Corner

Convention Time Again

On Sunday, August 11, Kappa Psi will convene in Kansas City, Missouri for the 37th Grand Council. Delegates and interested Brothers from our ninety plus Chapters will begin arriving for what may prove to be a historic event.

But just what is a Grand Council? The term "Grand Council" probably means different things to different people but to me it means KAPPA PSI in ACTION. It is a time when brothers from all parts of the nation, each with divergent opinions, come together to plot the course the Fraternity shall take for the up-coming two years. Think of it! Representatives of each Chapter providing *their* input into the decisions and indeed making the decisions which will be the policy of Kappa Psi, in many cases, for years to come.

Grand Council is a time for your Grand Officers and Executive Committee Members to report on *their* Stewardship of YOUR Fraternity. It is a time for you to seek answers to questions

which your Chapter may have; a time for you to ask "why or why not."

Grand Council is a time for fraternal exchange of ideas and friendships. It truly is a time when a brother realizes his Membership in Kappa Psi extends out beyond the confines of his college campus. A time when he can learn new ideas; greet his new brothers! A Grand Council Convention is a good time! A few days away from the hectic pace of summer internship and vacation schedules; a respite from irritable employers and even more irritable employees. It's a time to relax and enjoy the sun and fun of a new city; a new experience.

Grand Council is a time to participate, to become involved in your Fraternity and your profession. The Program Committee has arranged varied activities to interest each of us. Take a break and participate. . . . Plan now to attend! Don't let August 11th-14th come and go without *your* Chapter being represented in Kansas City!

From the Desk of the Grand Regent...

Due to circumstances beyond our control, the following letter from Grand Regent Campbell was not printed in the January-March Issue of the MASK. We print it in its entirety here with our apologies.

Brothers:

It is a particular pleasure to greet you in this the 70th Anniversary Issue of THE MASK. This is one more tangible measure of our proud history and a reason for celebration by all men of Kappa Psi.

A review of past issues of our official publication reveals much about the history of Kappa Psi. THE MASK has changed over its lifetime, editorially and physically. These changes have been reflections of the changes in our Fraternity and the people who comprise Kappa Psi...you the Brothers. Editors and Executive Committees have had as their objective a publication which is contemporary, interesting and useful to the membership. Despite the many differences noted between issues separated by years and decades, one finds a fine thread binding them all together...fraternalism...in particular, Kappa Psi-ism. Let us never lose sight of this binding force which makes Kappa Psi First In Pharmacy!

Those of us who entered the Agora in the decade of the fifties recognize, as do our predecessors, how very different THE MASK looks today in comparison to what we knew then. Likewise, let us recall how we looked, spoke and acted by comparison to the initiates of 1974. How similar is the curriculum of today to the pharmacy education in which we were engaged as Kappa Psi collegiate? Is the profession new Brothers are being prepared for the same as we looked forward to? I hope the point is clear.

This is not to imply that I or the Executive Committee, Editor, or Publications Committee are satisfied that our current MASK serves Kappa Psi in the best possible way. Nothing could be further from the truth. With the relief of severe budgetary restrictions, improvements should be imminent. However, input from you would be most useful in guiding the policy makers concerning what you want and expect from THE MASK. Feel free to communicate directly to the Editor, Executive Secretary, Publications Committee Chairman Hersheson, or me. We look forward to hearing from you.

We also look forward to visiting with many of you personally at the Kappa Psi Reception at the Chicago A.Ph.A. Convention next August and the 37th Grand Council Convention in Kansas City, MO the following week.

Until next time.

Fraternally yours,

Norman A. Campbell
Grand Regent



Kansas City— — Here We Come

The site of the 37th Grand Council Convention provides a wealth of activities for the mid-summer visitor. Whether you relish the old or the new, Kansas City has something for you. In the heart of it all lies Crown Center, a unique eighty-five acre complex of shops, recreation and restaurants.

Five miles south of downtown Kansas City lies Country Club Plaza a fifty-five acre business and entertainment district with a touch of the Old World. Approximately, twenty miles east of downtown, in Sibley, Missouri, one will find Fort Osage erected in 1808 by Captain Meriwether Lewis as a symbol of American military might in the West.

For the more contemporary history enthusiast, the Harry S. Truman Library and Museum is a must. Located ten miles from downtown in Independence, Missouri, the exhibition rooms display many valuable and historical artifacts collected by President Truman during his Administration. The Truman Library, dedicated in 1957, houses nearly ten million papers in a building of over 80,000 square feet.

Museums and art galleries abound in and around Kansas City. On Oak Street, the Nelson Gallery and Atkins Museum ranks as one of the six top gallery-museums in the country. Over a third of a million visitors view this \$25 million collection each year.

For nearly 150 years, Americans have had a love affair with their railroads. Kansas Citians are no exception. In River Quay, Missouri, they have built Smoky Hill Railway Museum to preserve the history of the rails in the area.

In addition to points of interest, one cannot forget the many elegant restaurants and night spots, headed by the Playboy Club, located at the top of your headquarters hotel, THE CONTINENTAL. Varied dining is the rule rather than the exception in Kansas City. Whether in the stately elegance of a grand hotel or the crowded camaraderie of a stand up sandwich shop, you'll find dining enjoyable and entertaining.

From the Desk of... The Executive Secretary

Dear Brothers:

Greetings from the Central Office. By the time you receive this issue of the MASK, many of you will have completed the current semester's work and are settling down to a summer of employment and hopefully, some well deserved relaxation.

The Central Office is moving into high gear preparing for the 37th Grand Council. We anticipate a very large attendance of delegates and friends. The program promises to be an outstanding one with activities planned by Gamma Theta collegiate chapter and the Kansas City graduate chapter.

Each chapter has received the colorful brochure on the Continental Hotel with the management eagerly awaiting your arrival. Convention delegates will be greeted by cordial personnel, attractive decor and reasonable prices. All necessary elements for a successful convention.

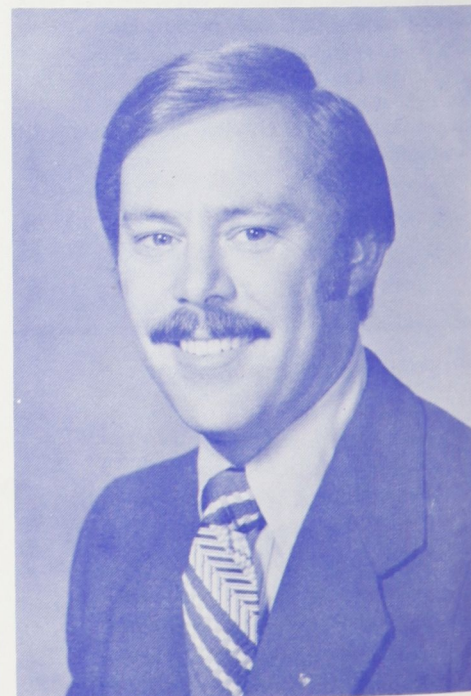
The character and direction your fraternity takes is a function of the leadership that is elected to the Executive Committee. It is each chapter's responsibility to see that they are represented in Kansas City so that your valuable input can be utilized in the leadership selection. Remember your Fraternity is what YOU make it.

The Program Chairman has outlined interesting and challenging sessions. He is looking for suggestions as to what you would like to do and discuss during workshop sessions. Again, this affords you the opportunity to be in on the decision making.

Over the past two years, the Central Office and Executive Committee have set priorities which were designed so that you would be able to participate at the 37th Grand Council. Reimbursement, low convention costs and an action packed program leaves no room for lack of participation. Kansas City is the time and place to voice your opinions and make changes. Learn more about your Fraternity and contribute to its future. See you in August!

Fraternally,

Donald G. Floriddia, Ph.D.
Executive Secretary



Great Houses of Kappa Psi

William R. Smith, R. Ph.,
Associate Editor

Featured in this, the *Seventieth Anniversary Issue* of the MASK, are the Houses of Chi, Beta Xi, Beta Omega, Gamma Gamma, Gamma Kappa, Gamma Nu, Gamma Pi, Gamma Chi, and Mu Omicron Pi/Detroit Graduate Chapters, nine of the *Great Houses of Kappa Psi*. We thank the Brothers of these Chapters for so graciously sharing their houses and experiences with us. Vicariously, join with us now in a surrogated visitation of nine *Great Houses of Kappa Psi*, each a *citadel of Fellowship, Industry, Sobriety, and High Ideals*.

Chi Chapter

We are very proud of our house, the whole Summer of 1973 was spent painting, plastering, and paneling. The foyer and halls all took on a new look. We had estimates of \$7,000, but with the Brothers doing the work, we only spent \$2,000 in carpentry work. The Brotherhood shown between those who worked, more than offset the time spent, and saved the Chapter \$5,000, which it did not have!

The Chi Chapter House is located on the Medical Center Campus of the University of Illinois, only two blocks from the Pharmacy Building, a great convenience for Brothers living-in. The Chapter House is also used for meetings, recreation, and a lounge area for members who commute.

The three large rooms on the first floor have much versatility. The living room has couches and a study table; it is utilized as a card room occasionally. Another room is used for table tennis games and tournaments. The third large room contains our trophies and crest, and serves as a barroom, containing two bars, a beer bar and a mixed drink bar. This party room also has a dropped ceiling with colored lights in clear plastic panels, sensitive to music.



Chi House lounge.

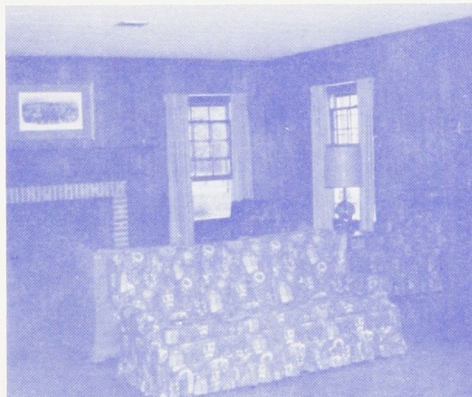
On every-other Friday night of the Quarter, the first floor is the scene of a party with a live band. We have established a reputation for the best parties on campus. Our parties supply considerable added revenue to support other activities.

The Chapter House has a capacity of thirteen live-in Brothers, each paying fifty dollars a month. The members fix their own meals in several kitchens. We have been renting this house from the University for a number of years. We are presently looking for a new house with a slightly more modern style. We intend to buy the next house and property so that we may ensure a place to return to in later years.

Beta Xi Chapter

The Brothers of Beta Xi Chapter are now the proud owners of an extremely modern, three story, colonial-style house located in the quiet surroundings of Finley Golf Course. It consists of twenty bed rooms, accommodating two Brothers each, a kitchen, dining room, parlor, Chapter Room, and House Mother's suite. It also boasts spacious front and back lawns plus a patio.

Our House would possibly still be a dream if in 1967 Brother F. Jackson Andrews, a Charter Member of Beta Xi, had not suggested that we should form a corporation and sell bonds. This proved to be a most feasible plan. The Brothers immediately formed a corporation, elected a Board of Directors, appointed a permanent treasurer, and employed the services of a lawyer to handle the legal aspects. It was decided that the bonds would be sold in one-hundred dollar multiples with 5% yearly dividends over a twenty year period. After accumulation of sufficient funds, the bonds are to be paid back. The initial purchase by Brother Andrews was a tremendous start, and with the other sales to alumni and various pharmaceutical organizations, a total of thirty-five thousand dollars was obtained.



Beta Xi living room. Note the large fireplace in the background for those cold winter nights.

A building fund, which had been started fifteen years before amounted to \$11,000. It was combined with a \$5,000 loan from the "NCPhA" and a \$5,000 loan from the American Pharmaceutical Research Foundation to give the sum of \$21,000. Added to the \$35,000 from the bonds there was \$56,000 to work with. A bank loan of \$100,000 at 8½% interest, to be paid back over fifteen years was obtained, giving a total of \$156,000 to work with. It provided ample coverage on the initial cost estimate which was:

House	\$140,000
Lot	5,000
Furnishing	7,000
Architect	11,000
Total	\$163,000

The University of North Carolina was very co-operative in leasing a lot for ninety-nine years for \$5,000. The ground breaking was held in the late Summer of 1969. In March, 1970, the finished product was turned over to the Brotherhood of Beta Xi Chapter.

With the House completed, some source of income was needed. The continuing bond sales furnish a considerable amount. As it stands now, room rent, kitchen profits, dues, and parlor fees provide the necessary funds. Each occupant pays thirty dollars a month for his room; this totals \$1,200 monthly. Dues and parlor fees account

for approximately \$1,500 monthly. Three meals are served five days a week; two meals are served on Saturday. Meals cost seventy dollars per month, which is cheaper than meals on campus. Another means of support is from the graduating seniors who set up a contributory plan before leaving.



Brothers Gary Duncan, Ken Keever, and Fred Locklear chatting in Beta Xi living room.

The new house has many outstanding features that make for a better social life for all the Brothers. The Chapter Room, probably the most eye-catching room in the house, provides an excellent place to watch the "tube." The living room, complete with a huge fireplace, is extra nice on a cold Winter night. The living room easily accommodates a large "combo" party. Likewise, the dining room can be converted into a party room complete with bar and juke box. There is a game room on the second floor that features "foosball," paddleball, and pinball. Among the grass and trees in the back yard are a basketball court, horseshoes, and a large barbecue pit.



Beta Xi kitchen. Note the total use of commercial or restaurant type equipment, especially the stove and grill, which would allow accommodation of large groups. This is a kitchen which other chapters could well consider.



Brothers Steve Hipp and Bryan Need at the Beta Xi Bar in party room.

There are twenty bed rooms, ten on the second floor, and ten on the third floor, with two Brothers per room; the House can accommodate up to forty Brothers. All the Brothers agree that the large rooms which have plenty of closet space are much better than the typical dorm room. On the third floor is the Office, where the Officers keep their files and do their work.

Upkeep of the House is something that all the Brothers take part in. We have a House-manager who directs all the cleanups. During pledge training, each pledge has a certain area that he spends about fifteen minutes a day cleaning. We take great pride in our Chapter House; it still looks as new as it did four years ago.

Beta Omega Chapter

Beta Omega's Chapter House is a five minute walk from the Pharmacy School of Temple University in North Philadelphia. For ten years the Chapter occupied one-half of the structure; on April 4, 1972, the remaining half was purchased for \$8,000. When the first half was purchased in 1962, alumni Brothers were asked to contribute money to the project with the rest of the money coming from a bank loan. The funds solicited for the purchase of the second half ("Annex") were obtained by selling rooms for \$250 or \$500, depending on the size of the room. Six \$250 rooms, and two \$500 rooms were sold; a \$5,000 bank loan provided the balance.

All the needed repairs were done by undergraduate Brothers. Since 1962 the only outsiders to work on the House were the telephone man, plumber and electrician; the last two are not really outsiders, but fathers of two of the Brothers.

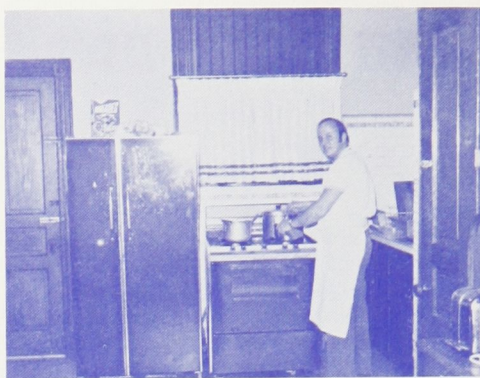
Our dues are \$40/Brother/semester. Monthly room rent is \$35/Brother/month for a double room, and \$40/Brother/month for a single room.



Beta Omega, Note the beautifully detailed wainscoting.

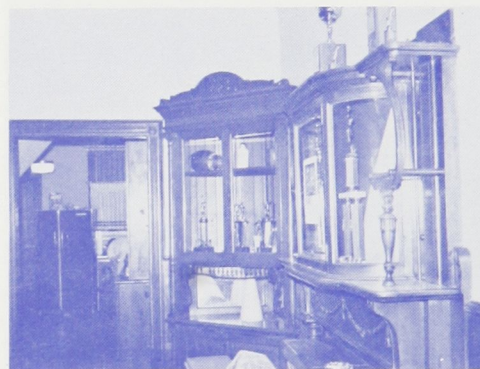
Currently we have thirty-two Brothers, fourteen of whom sleep-in and the rest commute. As the House can sleep eighteen comfortably, we sleep four freshmen who came to us recommended by our alumni. We find this to be very helpful in attracting pledges to Beta Omega, in that some of the freshmen drop over to see their friends, and then, we got 'em! Ten of the bed rooms are singles and four are doubles. The two halves of the Chapter House are adjoined on the first and third floors, with the basements and second floors remaining separate entities. The House boasts twin kitchen and living rooms, five bathrooms, laundry room, five fireplaces, table tennis room, trophy room, model pharmacy, museum, party room, and a library. We also have a sunroof, and an outside barbecue.

For an additional six dollars per week any Brother can eat four dinners and five lunches prepared by our *Master Chef*, Brother Ted Stucka.

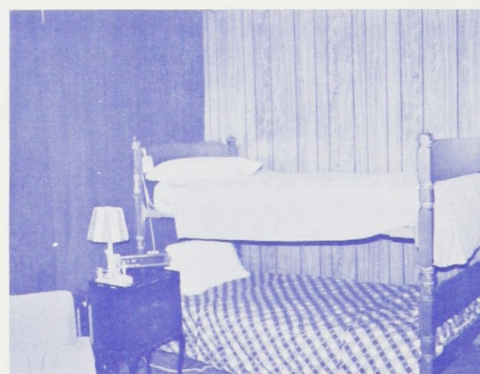


Brother Ted Stucka, "Master Chef," at home in the Beta Omega kitchen.

Some of the social functions that we use our house for are as follows: Fraternity Rush, free party for freshmen on first day of semester, free luncheon for freshmen, card party nights, smoker night, our every-other-week-theme parties, fresh-sit-down dinner, smorgasbord dinner for fathers, "Gay 90's" party, St. Patrick's Day party. While our freshman dinner is usually a catered affair, our last one was prepared by our *Master Gourmet Chef*, Ted Stucka. The menu included, stuffed turkey and all the trimmings, roast beef, and such other items to tantalize the taste buds; it was served to prospective pledges, under-graduates, faculty, etc., sixty-five people total. All this was preceded by a cocktail hour where everyone was presented the opportunity of mingling.



Beta Omega, beautiful woodwork enhances a display of trophies.



Typical Beta Omega bed room, the electric blanket is a warm touch.

Beta Omega is known on campus as the "smart" fraternity. We were fortunate enough to win the Scholarship Tray, implemented by the Philadelphia Graduate Chapter. In the Spring semester of 1973, approximately 75% of our Brothers were on the Dean's List, and seven are Rho Chi Members.

Our Chapter is very active and close knit. Much of the activities center at the Chapter House. We have good alumni support, good advisory personnel, and a strong sense of **BROTHERHOOD.**

Gamma Gamma Chapter

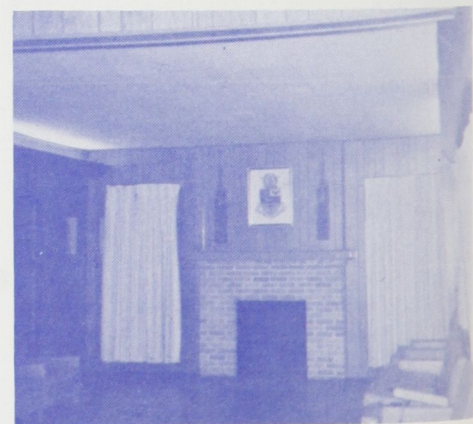
As the only professional fraternity at the University of Texas to own a House, we were fortunate that, having lost two previous houses to an expanding University, our Brothers in 1967 acquired our present House through issuance of bonds. The initial cost of the House was \$55,000, with over half of that expense already paid for. The House is owned and maintained through a Graduate Corporation, funded solely with rent money. The House, with two apartments in a separate building in back, can accommodate a total of fourteen occupants, two per room. The House is always filled due to low rent, \$40/man/month, and its close proximity to the University of Texas Campus.



Gamma Gamma Kitchen.



Gamma Gamma Actives in "TV" Room before a Chapter Meeting.



Gamma Gamma Living Room, during a cleaning party. Note the wood paneling and sound absorbing ceiling used to modernize the room.

We have a large Chapter Meeting Room, recreation room with "TV," study area, kitchen, and plenty of outside space. Much room is needed to hold the fifty-four active Brothers during meetings and social functions such as: sock hops, pre- and post-football game parties, and other get-togethers.

This is our House; a lot of work has gone into it; every Brother in Gamma Gamma Chapter is proud of it.

Gamma Kappa Chapter

The first discussion of a Chapter House was made on March 9, 1960, under the direction of Regent Thomas Brown. It took us about *eleven years* before we did buy our House. We had fundraising functions such as the following: selling lab coats, stationery, *Hobo Day* balloons, calendars with different college queens for each month; and did a survey for R.A. Gosselin. In recent years our main funds came from selling *Hobo Day* buttons (Homecoming buttons) where we make about \$1,000 from selling about 4,000 buttons. Our Chapter is incorporated; thus, we can sell bonds. Every Member of the Chapter has bought one, and the new pledges try to sell bonds as a pledge class project.

The rent for live-in Brothers is \$35/month; this does not include meals or maid service. The Campus dorm rent is \$45/month. We rent to anybody during the Summer for \$30/month.

On January 13, 1971, the present Chapter House was presented to the Chapter for consideration. May 12, 1971, the House was officially purchased for \$30,000 by a unanimous vote. Since the House is owned by the Chapter, all the Brothers have chipped in with painting the House gray with white trim. A large gray 2½ story house may seem unique to the town of Brookings, South Dakota, but at least it helps our Alumni find the Kappa Psi House when they are in town. One of the living rooms has a bright red shag carpet with black furniture in it. Our House represents Kappa Psi in full living color.



Brother Jerome Koppes in his room in Gamma Kappa House.

Our House covers two lots. With all this room there is plenty of area for thirteen Brothers living in the House to park cars and even have room for a football practice session. Capacity of the house is fourteen. The House has nine bed rooms (four on the main floor and five upstairs), three bath rooms (one on the main floor and two upstairs), two living rooms, and an entryway. There is an attic which is used for storage now, but could be made into a couple of bed rooms. In each bed room there is a desk for study. In the attic there is a test file open for the Brothers' use. The living room is carpeted and can be used for dancing parties. The second living room is used as a "TV" room.

In the *eleven year period* in which it took us to buy a house, we spent about \$1,000 for options

to buy houses. This should be watched. It is an easy and quick way to spend money which took many hours of hard work for the Brothers to raise. Under South Dakota Law, our Chapter is tax-exempt because it is incorporated.

Once you buy your House or even before, set up a House Account separate from the rest of the Fraternity money. When your House is bought set up a House Committee. We head ours with the Vice Regent. The Committee elects a person living in the House to be House Manager.



Brother Don Smith in his room in Gamma Kappa House.

Within the past three years the House has increased in value through work of the Brothers. However, most of all, the House has increased the unity of the fraternal bond beyond monetary value. *Brotherhood has no price; there is much unity to be gained in living under one roof.*

Gamma Nu Chapter

We at Gamma Nu are proud of our newly acquired Chapter house. It is most likely, that our house is the most recent addition to the *Great Houses of Kappa Psi*. It was purchased in December of 1973 by the Pacific Graduate Chapter. The house was funded through their efforts and the title deed is in their Name. The cost of the house was \$45,000.00 and the current Market value is \$48,000. There are eight Brothers living in the house.

The Services provided to the house are maid service twice monthly, Garbage is collected weekly, utilities, and telephone service (excluding long distance calls). Rent covers all of these expenses. Rent on a single room is \$85.00 mo.; Rent on a double room is \$75.00 mo.; rent on the garage room is \$50.00 mo.



Open House: Dean and Mrs. Rowland, Brothers Don Floriddia and Norman Koboyashi.

We at Gamma Nu are proud of our house. Primarily, the only recreational facilities the house has is a Color T.V. and a weight lifting room in the basement. The house has a permanent gas barbecue in the back yard. We do have many other projected plans for the house which are to be funded by our house fund. Some of the projected plans are a beer machine on the order

of a Coke machine—the current hang-up is finding one—a swimming pool in the back; along with a few dozen other dreams.



Gamma Nu Trophies, awards, mugs, and class pledge paddles.

A unique characteristic of our house is that the three couches in the house pull out in double beds; giving us plenty of space for any visitors to the house. This feature has already been used by a number of our graduate brothers. At this moment, the most unique feature is a *place to call home*.

Gamma Pi Chapter

Gamma Pi Chapter at St. Louis College of Pharmacy is the only fraternity on campus that owns its own House; it is one block from the School and adjacent to the major parking facility. The House was completely remodeled about seven years ago, and has had various improvements since that time.

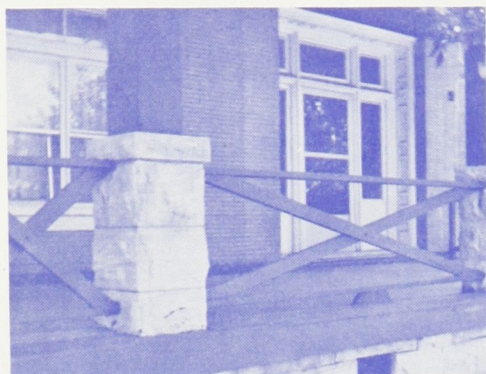
The Brothers live in the House for one dollar/day; with no maid or food service. Brothers who live out of the House are charged a five dollar/month fee for using the facilities during the school year. The back of the House was once a yard, but has been converted to an asphalt-topped parking lot for Brothers, holding twenty-one cars; out of House Brothers are charged twenty dollars a semester to park.

The newly remodeled basement is an outstanding feature of our House; it is provided with a large bar. The eye-catcher of the first floor is the large trophy case which adorns the relaxing area of the House.



On the second and third floors of the House are the rooms for living and sleeping. The second floor has space for eight, and the third floor for four. The showers are located in the second

floor bath room, with a sink and toilet on the third floor for convenience. In all, the House has four bath rooms, one on each floor. Another room on the first floor to attract attention is the yearbook room, from which the publication of the School's yearbook is supervised. The first floor is equipped with kitchen facilities, that get their use and abuse.



Gamma Pi front porch.



Gamma Pi parking lot.

The maintenance of the House is under the direction of the House Manager. Twice weekly, house checks are done on every part of the House. Each Brother living in the House is responsible for cleaning a different area each time. Also, there are clean-up committees set up for the day after each party.



Gamma Pi Grand Stairway.

Our pride in the House shows from Forest Park Boulevard. The front is adorned with a large lighted sign with the letters KY standing boldly out to let everyone know where we are. The front porch of the House is very spacious and sturdy. It was one of the best improvements made when the House was remodeled.

Gamma Chi Chapter

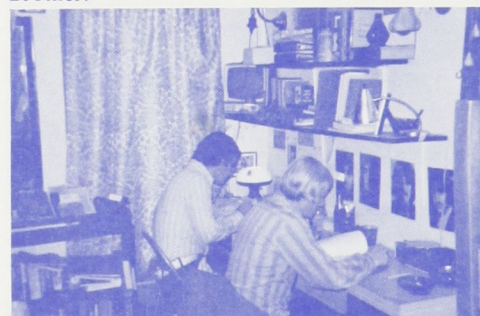
Gamma Chi Chapter at Ferris State College has had its House for eleven years. It was funded through a group of concerned alumni that incorporated to provide the funds to purchase the House. The corporation consists of thirty-one members. House matters are governed by Dr. Ronald Jacoby, a faculty member, corporate member, and an initiate of gamma Chi chapter.



Brother Dave Hales on his way to dinner in the Gamma Chi House.

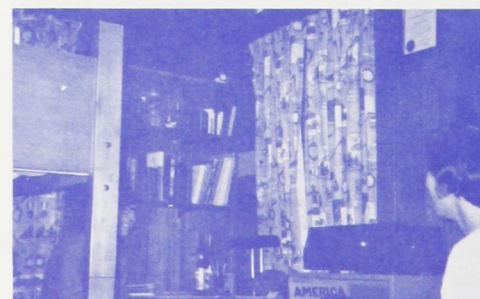
The House cost \$14,000 in 1962. Recent assessments value our House at \$35,000. Improvements that have boosted the value of our House are things such as: remodeling of the living room, installation of a new front porch, modernization of the upstairs bath room, all of which have taken place in the last three years.

The capacity of the House is eighteen men, with a twelve man break-even point; present occupancy is seventeen. Each Brother pays \$100/month which includes room and board. All meals are prepared by "Mom" our live-in cook, which proves economical as well as convenient for each Brother.



Brothers Mike Pasqual and Bill Valler in their bed room at Gamma Chi House.

There is no set number of occupants assigned to each room. All bed rooms in the House will accommodate two Brothers while some of the larger rooms accommodate three or four Brothers. Each room contains study desks for each Brother which supply individuals with appropriate facilities to obtain high scholastic achievement that has been a Gamma Chi tradition throughout the Chapter's history. Being that our Chapter House is rather old, it was not built to accommodate recreation within the House itself.



Brothers Mike Laeder and Tom Olezak enjoying some music in a Gamma Chi bed room.

However, our rather large side yard suffices nicely for Sunday afternoon football games, etc.

To support the House additionally, each Brother gives five dollars to the House out of this Chapter dues each term. Three dollars of this is put in the general House fund; the remaining two dollars goes to the Building Fund and is used for the purchase of appliances, furniture, etc.

Our House serves as a place for all Chapter Meetings and as a general nucleus for all Chapter activities.

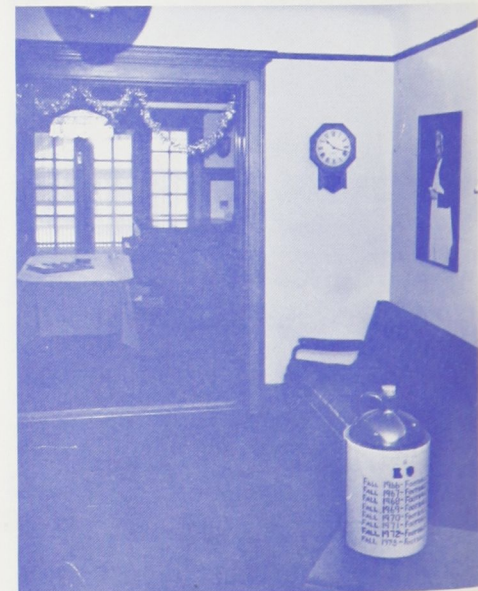
Mu Omicron Pi/ Detroit Graduate Chapters

In 1960, we were informed that our Chapter House, "Lindbergh House" (the birthplace of aviator Charles A. Lindbergh), was to be condemned for urban renewal in 1964. 1964 came and went; the condemnation order stood; the money never came. In 1970, the late Federal Judge Theodore Levin was called from retirement to hear of our plight at the hands of numerous City and Federal agencies, and the similar fate of over four-hundred neighbors, with whom we were joined in a class action suit; the Honorable Jurist found in our favor. This monumental decision was to be the last rendered by the Esteemed Jurist before his death.

The combined Executive Committees of both Chapters spent considerable time examining many prospective houses. In August of 1970, we found a house that would meet the needs of both Chapters. For temporary working cash, while awaiting payment from the City of Detroit, eight promissory notes of \$1,000 each, paying 1% per month, were issued for 90 days.

After legal fees and termination of the land contract on the "Lindbergh House," we had \$15,000 to work with. We purchased our "new" Chapter House, a turn-of-the-century, three story, brick, sixteen room mansion on Virginia Park for a very reduced price of \$18,000. A down payment of \$6,000 was made; a \$12,000, 15 year, 10% mortgage obtained; \$9,000 was held in reserve for improvements and furnishings.

On October 25, 1970, a Champagne, open house, dedication party for 200 was held. The House was formally dedicated by the late Executive Secretary, Gerald C. Henney; the dedication plaque he presented now hangs in the entry.

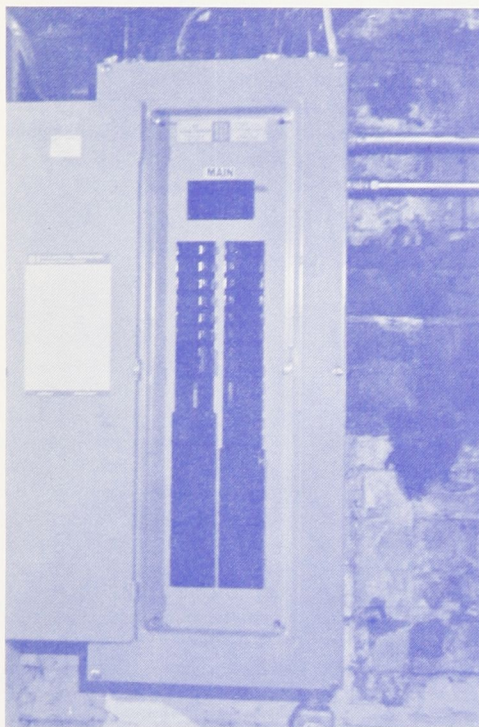


Mu Omicron Pi Jezewski Living Room, looking into the Tilson Dining Room. As indicated on the jug in the foreground, Mu Omicron Pi Chapter has not lost a football game to Phi Delta Chi since 1965.

One might wonder, why such a large proportion of our available cash was held in reserve. The following improvements made during the first year of occupancy should explain this.

1) The living room (15 x 25), dining room (15 x 17), and main hall were carpeted with a commercial (red and black) grade of carpet. Cost: \$800.

2) A new 200 amp electrical service was installed. Bids for identical specifications ranged from \$750 to \$1,600. Final cost: \$800.



Mu Omicron Pi Electric Service Panel, 220 volt, 200 amp, \$800. While not an eye-catcher to thrill prospective pledges with, it is probably a must for any house over 30 years old.

3) One of the Mu Omicron Pi Chapter Brothers, Dennis Carden, was a plumber before starting Pharmacy School. Under his supervision, all old plumbing and gas pipe in the basement was gutted; all new gas pipe, and copper water pipe was installed; a four-man shower room was built. Over \$2,000 worth of plumbing was done. Final cost: \$700.

4) Two new 75 gallon hot water heaters were installed. Cost: \$200.

5) Because of several "break-ins," a security fence for the back yard, four car brick garage, and sides of the House was needed. An industrial gage, chain-link, barbed wire topped, fence was built with Collegiate and Graduate Brothers providing the labor. The "fortress" perimeter is almost 400 feet; minimum height, 9 feet; maximum height, 17 feet; weight of cement foundations, 10,000 pounds; length of barbed wire, one-half mile. There have been no more "break-ins"! Cost: \$1,900.

6) Security type, seven tumbler locks were installed on the five exterior floors and two yard gates. Conventional locks were also installed on all bed rooms and offices. Cost: \$500.

7) Improvements in electrical service of the kitchen, garage, basement, and third floor were made. Cost: \$500.

8) A library was built on the third floor with labor provided by Collegiate and Graduate Brothers. Cost: \$1,500.

9) Four, extra sturdy, double bunk beds and eight dressers were needed for sleeping rooms. Cost: \$800.



Mu Omicron Pi, Holden Library, post finals.

10) New durable furniture for the main living room was needed. A friend in the furniture business sold us everything we wanted at his cost plus \$5.00 per item for handling and delivery. Cost: \$1,500.

11) The Roman Catholic Archdiocese of Detroit was most co-operative in allowing us to purchase from them much used furniture at very low prices, in the nature of: desks, chairs at \$2.00 each, tables, refrigerators at \$3.33 each, an electric stove at \$3.33, kitchen equipment, book shelves, and a pew (\$28.00) for the landing on the grand stairway. A crew of five Collegiate Brothers spent two days with Brother Bill Smith at the wheel of a ten ton truck picking up the above items, and many other donated furnishings from Brothers in the Detroit area. Cost: \$500.



Mu Omicron Pi Grand Stairway. Note the beautiful natural oak woodwork.

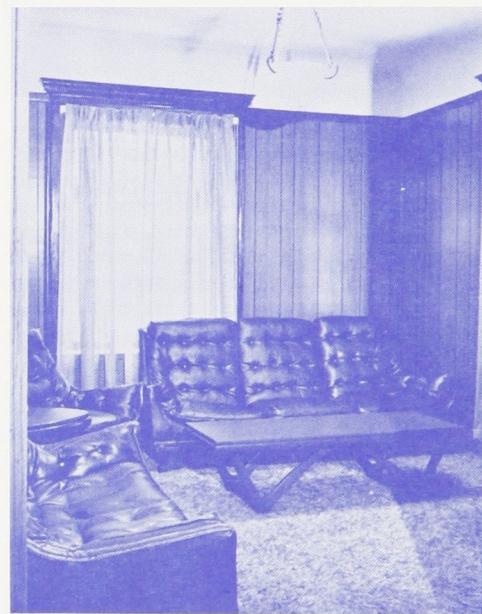
Built in 1908, our Chapter House had been in the same family, receiving excellent care, for three generations when we bought it. With exterior walls of solid brick, 12 to 16 inches thick, the House is quite solidly built. The structural soundness of the building was a major factor in the decision to purchase. At today's construction prices, the House of over 4,000 square feet would cost at least \$80,000 to duplicate.

On the first floor is the Jezewski Room (living room), Tilson Room (dining room), breakfast room, kitchen, communications room, main hall, and a newly remodeled (by the Graduating Class of 1973 for \$1,200) "TV" room. There are two stairways to the second floor which has four

bed rooms (all about 3 x 14) each accommodating two Brothers, the Detroit Graduate Chapter Office, two bath rooms, and a Sun deck. The third floor is home to the Mu Omicron Pi Chapter Office, Holden Library, study room, and two large storage areas. The basement has the usual furnace room, laundry/kitchen, junk collection area, recreation room, toilet, shower room, and hopefully by the end of 1974—a health club and sauna bath.

There are eight Brothers living in the House, paying \$25/month each, generating \$200/month, or \$2,400/year. The monthly mortgage payment is \$128.96, or \$1,547.52/year. Annual City and County taxes are about \$750. Annual insurances run about \$250. Thus, annual fixed property expenses are almost covered by room rentals. The Mu Omicron Pi Chapter is responsible for utilities and general minor maintenance. The Detroit Graduate Chapter assumes financing of major maintenance and capitol improvements.

At the time of the purchase of the House, the Mu Omicron Pi Chapter had about \$2,500 in its new house fund, which, starting in 1966, had been raised from \$100 pledges by graduating seniors payable two years after graduation. These funds have been used by Mu Omicron Pi for furnishings such as the living room, "TV" room, etc. Presently, there is about \$600 in this reserve.



Mu Omicron Pi, newly renovated "TV" Room.

The newest fund raising program in the Detroit Graduate Chapter has been the offering of Life Memberships for \$500, and Memorial Life Memberships for \$1,000. The Memorial Life Membership allows the donor to have a room named for him or any one he wishes. To date there are three Memorial Life Members: C. Douglas Acord, E. Joseph Holden, and Frank V. Jezewski; and three Life Members: Paul E. Anderson, Gerald R. Decoster, and William R. Smith. All proceeds from this program, \$4,500, have been placed in a Debt Retirement Fund. With a little bit of luck, \$5,500 more, under the continued Chairmanship of John F. Radtke, will be raised soon to retire the \$10,000 balance on the mortgage. This would free an additional \$1,600 annually for improvements. Annual Dues in the Detroit Graduate Chapter are \$30.

In the area of future improvements, there are several currently under study by the Joint Properties Management Committee, which is a standing committee composed of: two Collegiate Brothers, appointed by the Collegiate Regent; two Graduate Brothers, appointed by the Graduate Regent;

and a Graduate Brother as Chairman, appointed by the Graduate Regent with the Advice and Consent of the Graduate Board of Directors. Recommendations of the Committee are approved by both Chapters before implementation. The Committee also reviews general policy of House operations, which are under the direct control of the Collegiate Chapter.



Detroit Graduate Chapter Office.

Proposed improvements to the House and Property must be thoroughly considered for their effect on property values, potential utilization, quality of living enrichment, ecology, cost, financing, and implementation. Currently under study are: increased landscaping of the back yard, 50 x 100., to create a more quiet, park-like, atmosphere; finishing off the interior of the four car, 24 x 44, brick, garage into a year-around, combination party, ball, and meeting room; bath room modernization; kitchen/breakfast room renovation, changes in room functions to create one or two more sleeping rooms, increasing live-in capacity from eight to ten or twelve; conversion of the present "Siamese-Twin-Octopus" forced-air heating system to circulating hot water for the basement and first floor, and individually-room-controlled electric heat for the second and third floors, which would allow the furnace room to become a game room; carpeting of the communications room, grand stairway, and second floor hall.



Mu Omicron Pi Kitchen. It is functional, but definitely not ideal for large gatherings.

Our House is under constant use by the Mu Omicron Pi Chapter, and very frequently used by the Detroit Graduate Chapter. It is a priceless tool utilized in cementing the bonds of Brotherhood. With the exception of our combined Annual Awards Banquet, the House is used for virtually every kind of fraternal activity imaginable. *This*

is our House, a bastion of Fellowship, Industry, Sobriety and High Ideals; we love it!

Summation

Each of the Chapters has extended all Brothers an invitation to personally visit them, or to write to them for additional information. Should you wish to establish further communications with nine of the *Great Houses of Kappa Psi*, their addresses are as follows:

Chi Chapter
726 South Ashland
Chicago, Illinois 60607

Beta Xi Chapter
208 Finley Road
Chapel Hill, North Carolina 27514

Beta Omega Chapter
1247 West Allegheny Avenue
Philadelphia, Pennsylvania 19133

Gamma Gamma Chapter
608 Park Place
Austin, Texas 78705

Gamma Kappa Chapter
629 Eleventh Avenue
Brookings, South Dakota 57006

Gamma Nu Chapter
236 West Stadium Drive
Stockton, California 95207

Gamma Pi Chapter
4536 Forest Park Boulevard
St. Louis, Missouri 63108

Gamma Chi Chapter
119 South Warren
Big Rapids, Michigan 49307

Mu Omicron Pi and/or Detroit Graduate Chapters
719 Virginia Park
Detroit, Michigan 48202

As can be seen from the *Chapter House Comparison Table*, monthly rents range from twenty-five to eighty-five dollars, with the average being forty dollars. House live-in capacities range from eight to forty, with the average being sixteen. The average number of Brothers living in each bed room is two. An interesting exception to the one, two, three, or four men/room concept is the twenty-four man bunk room utilized at Gamma Delta Chapter. Twelve small study rooms, each accommodating two Brothers, are provided to house the personal possessions of the live-in Brothers.

Many different methods of fund raising have been presented in this simulated tour. No attempt will be made to summarize them, as they all have merit. What is important to consider is that none of them synthesized a house over night, and all of them required faith, work, and time for implementation. *A journey of a thousand miles begins with one small step.*

Even a modest size chapter of twenty-five Brothers, by raising its dues by two dollars a month, could generate fifty dollars a month, or five-hundred dollars a year toward a house. Once the desire for a house has become a goal of a chapter, most any fund raising methods can be employed. Given any project, if every Brother pledges to work hard enough to raise \$100 toward that project, \$2,500 can be generated every time. Thus, even the smallest chapter can in time create a rather tidy nest egg. The important concept here is that: once a goal has been established, so long as constant progress, no matter how modest, is being made in that direction, the goal shall come to be reality. *There can be no stopping of a Chapter that has iron-willed determination!*

We hope that you have enjoyed this simulated excursion of nine *Great Houses of Kappa Psi*. We salute these *fortresses of Fellowship, Industry, Sobriety, and High Ideals*, and thank their Brothers for making us their welcome guests.

Chapter House Comparison Table

Chapter Name	Monthly Rent	Live-in Capacity	Total Occupancy	Per cent Occupancy	Average Number/room	Food Service Offered
Chi	\$50.00	13	N/A	N/A	N/A	No
Beta Xi	\$30.00	40	40	100	2	Yes
Beta Omega	\$35.00 ^a	18	18	100	1.3	Yes
Gamma Gamma	\$40.00	14	14	100	2	No
Gamma Kappa	\$35.00	14	13	93	1.6	No
Gamma Nu	\$75.00 ^c	8	8	100	1.3	No
Gamma Pi	\$30.00	12	N/A	N/A	N/A	No
Gamma Chi	\$40.00 ^b	18	17	94	3	Yes
Mu Omicron Pi/ Detroit Grad.	\$25.00	8	8	100	2	No
Average	\$40.00	16	15	98	2	33%

N/A = Data Not Available

a: Single occupancy rate is \$40.00/month

b: Estimated rate; actual rate of \$100/month includes meals

c: Single occupancy rate is \$85.00/month

Candidates for Grand Office

For Grand Regent

William A. Fitzpatrick

Third Grand Vice Regent
Initiate of Gamma Pi Chapter
Community Pharmacist; Owner of Fitzpatrick
Pharmacy, St. Louis, Missouri
Also a Candidate for Second Grand Vice Regent



Benjamin R. Hershenson

First Grand Vice Regent
Initiate of Mu Chapter
Associate Professor of Biology and Director of
Division of Special Programs, Massachusetts
College of Pharmacy



James P. Vacik

Former Third Grand Vice Regent
Initiate of Pi Chapter
Professor and Chairman, Department of Pharma-
ceutical Chemistry and Bionucleonics, North
Dakota State University
Also a Candidate for Second Grand Vice Regent



Jerome P. Delaney

Grand Counselor
Initiate of Gamma Iota Chapter
Pharmacist-Attorney in Private Practice,
Buffalo, New York
Also a Candidate for Grand Counselor



For Second Grand Vice Regent

Frank P. Facione

Editor of the MASK
Initiate of Mu Omicron Pi Chapter
General Manager, Jason's Pharmacy, Dearborn,
Michigan and Instructor of Pharmaceutics,
College of Pharmacy and Allied Health Pro-
fessions, Wayne State University
Also a Candidate for Graduate Member-at-Large
of the Executive Committee



David B. Moore

Initiate of Nu Chapter
Assistant Administrator, Connecticut Mental
Health Center and Lecturer in Administration,
School of Medicine, Yale University
Also a Candidate for Grand Historian



For First Grand Vice Regent

John Atkinson, Jr.

Second Grand Vice Regent
Initiate of Theta Chapter
Unit Head, Investigational Products Laboratory,
Smith, Kline and French Laboratories
Also a Candidate for Second Grand Vice Regent

Richard B. Stephens

Initiate of Beta Xi Chapter
Community Pharmacist; Mann's Drug Store,
Highpoint, North Carolina

Richard P. Mole

Satrap of Province I
Initiate of Mu Chapter
Community Pharmacist; Manager, Osco Drug,
Cambridge, Massachusetts



John Atkinson, Jr.

William A. Fitzpatrick

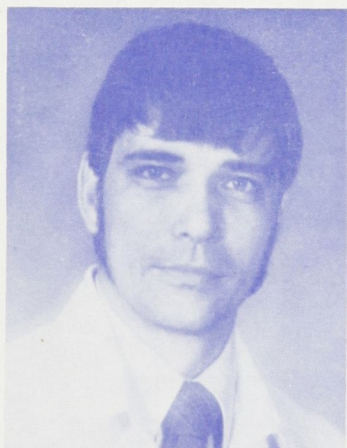
James P. Vacik

For Third Grand Vice Regent

Ronald S. Doyle

Coordinator of Province and Graduate Affairs
Initiate of Delta Beta Chapter

Community Pharmacist; Owner of Sheen Drug,
Oklahoma City, Oklahoma and Clinical In-
structor of Pharmacy, University of Oklahoma



Bryant W. Fitzgerald

Initiate of Gamma Chapter

Professor of Pharmacy, College of Pharmacy,
Ohio Northern University



Donald G. Floriddia

Executive Secretary

Initiate of Mu Chapter

Assistant Professor of Pharmaceutics, School
of Pharmacy, University of the Pacific

Also a Candidate for Graduate Member-at-
Large of the Executive Committee



Dewey D. Garner

Graduate Member of the Executive Committee
Initiate of Beta Rho Chapter

Associate Professor of Health Care Administra-
tion University of Mississippi

Also a Candidate for Graduate Member-at-
Large of the Executive Committee

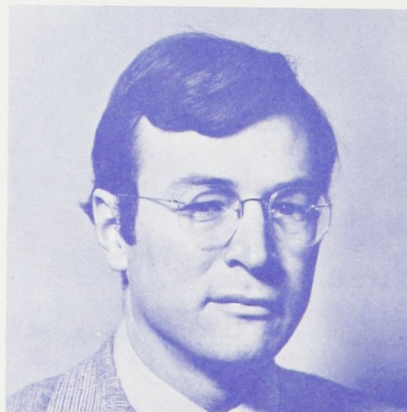


For Grand Historian

David S. Forbes

Initiate of Beta Psi Chapter

Assistant Professor of Pharmacy Administration,
College of Pharmacy, North Dakota State
University



Joseph F. Miletta

Secretary-Treasurer of Province V

Initiate of Gamma Iota Chapter

Community Pharmacist; Corporate Officer,
Val Drugs, Buffalo, New York Also a Candi-
date for Graduate Member-at-Large of the
Executive Committee



Leonard L. Naeger

Grand Historian

Initiate of Gamma Pi Chapter

Assistant Professor of Pharmacology, St. Louis
College of Pharmacy



For Grand Counselor

John F. Kerege

Initiate of Beta Pi Chapter

Pharmacy Resident, University of Kentucky
Medical Center-Drug Information Center



Leo J. Schermeister

Initiate of Beta Sigma Chapter
 Professor and Chairman, Department of Pharmacognosy, College of Pharmacy, North Dakota State University

**William R. Smith**

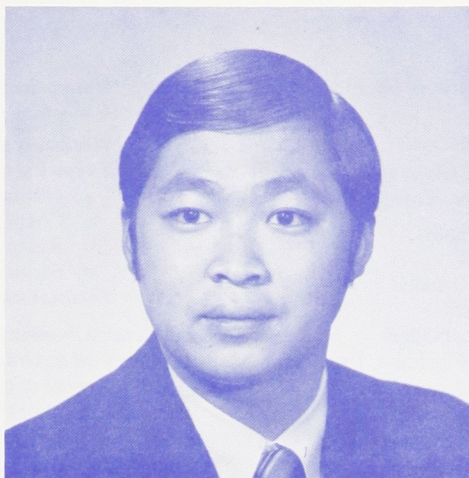
Associate Editor of the MASK
 Initiate of Mu Omicron Pi Chapter
 Community Pharmacist; Manager of Berlin Pharmacy, Warren, Michigan
 Also a Candidate for Grand Ritualist

**Jerome P. Delaney****For Grand Ritualist****Larry L. Slater**

Graduate Member at-Large of the Executive Committee, Initiate of Gamma Theta Chapter
 Community Pharmacist; Manager of Revco Drug Center, Kansas City, Missouri
 Also a Candidate for Graduate Member-at-Large of the Executive Committee

**William R. Smith****For Graduate Member
-at-Large****Christopher C. Gong**

Initiate of Gamma Nu Chapter
 Community Pharmacist; Long's Drug Stores, Fresno, California

**Bruce D. Martin**

Satrap of Province II
 Initiate of Beta Delta Chapter
 Professor of Pharmaceutical Chemistry and Dean, School of Pharmacy, Duquesne University

**Richard L. Ross**

Initiate of Upsilon Chapter
 Pharmacy Inspector, Board of Pharmacy - State of Kentucky and Consultant to Department of Health, Medical Care Standards Program

**Ben Welch**

Initiate of Gamma Xi Chapter
 Hospital Pharmacist; South Carolina State Hospital, Columbia, South Carolina



Frank P. Facione
Donald G. Floriddia
Dewey D. Garner
Joseph F. Miletta
Larry L. Slater



37th GRAND COUNCIL CONVENTION PROGRAM

First General Session: MONDAY AUGUST 12th - Ballroom 6th Floor

8:30 a.m. *Registration:* Main Lobby

9:00 a.m. *Call to Order:* Norman A. Campbell, Grand Regent

Welcomes: Mayor of Kansas City - Dean of College of Pharmacy at
Kansas City - Regent Gamma Theta Chapter, Kansas City

Opening Ritual: Patrick R. Wells, Grand Ritualist

Invocation: Patrick R. Wells, Grand Ritualist

Memorial Service: Patrick R. Wells, Grand Ritualist

Report of Registration Committee: Bill Ingram

Report of Credentials Committee: Leonard L. Naeger

Roll Call & Seating of Delegates: Donald G. Floriddia, Exec. Sec.

Introduction of Grand Officers and Executive Committee:

Norman A. Campbell

Report of Program Committee: William A. Fitzpatrick, Chairman

Reading of Communications: Donald G. Floriddia, Exec. Sec.

Report of the Parliamentarian: Jerome P. Delaney, Grand Counselor

Report of Nominations Committee: Louis Fischer, Past Grand Regent

BREAK

Report of the Grand Regent: Norman A. Campbell

Report of the Editor of The Mask: Frank P. Facione

Report of the Executive Secretary: Donald G. Floriddia

Report of the Assistant Executive Secretary: Robert G. Fisher

LUNCH

Second General Session: MONDAY, AUGUST 12th - Ballroom 6th Floor

2:00 p.m. *Call to Order:* Norman A. Campbell

Report of the Registration Committee: Bill Ingram

Report of the Credentials Committee: Leonard Naeger

Roll Call: Donald G. Floriddia

Executive Committee Reports:

First Vice Grand Regent: Benjamin R. Hershenson

Second Vice Grand Regent: John Atkinson, Jr.

Third Vice Grand Regent: William A. Fitzpatrick

Grand Historian: Leonard L. Naeger

Grand Ritualist: Patrick Wells

Grand Counselor: Jerome P. Delaney

Comments by other members of the Executive Committee

Committee Reports:

Frank H. Eby Loan Fund: John Atkinson, Jr.

Graduate Development Advisory: Lynn Brady

Legislative: Jerome P. Delaney

Public Relations: John Atkinson, Jr.

Publications: Benjamin R. Hershenson

Scholarship: August Danti

Coordinator of Field Secretaries: Durwood N. Entrekkin

Century Fund: Benjamin R. Hershenson

Centennial Celebration: James D. Seymour

Coordinator of Province & Graduate Affairs: Ronald S. Doyle

BREAK

Workshop: *Introductions of Candidates for National Office:*
Norman Campbell

Workshop and Interaction Sessions: *Moderator:* - Donald G. Floriddia
Kappa Psi - "A Self-Analysis"

a. National vs. Local Chapters

b. Chapter Finance & Management

c. Rushing & Pledging

d. Service to our School & Profession

Facilitators: Members of the Executive Committee

Third General Session: MONDAY, AUGUST 12th - Ballroom 6th Floor

7:30 p.m. *Call to Order:* Norman A. Campbell

Report of the Registration Committee: Bill Ingram

Report of the Credentials Committee: Leonard Naeger

Roll Call: Donald G. Floriddia

Discussion of needed Constitutional changes: Jerome P. Delaney

Proposed Amendments to the Constitution: Jerome P. Delaney

Old Business: Norman A. Campbell

Open discussions between Membership and Officers

Fourth General Session: TUESDAY, AUGUST 13th - Ballroom 6th Floor

8:30 a.m. *Registration:* Main Lobby

9:00 a.m. *Call to Order:* Norman A. Campbell

Report of Registration Committee: Bill Ingram

Report of Credentials Committee: Leonard Naeger

Roll Call: Donald G. Floriddia

Main Speaker: Confirmation to come

Panel Discussion: Professional Areas in Pharmacy

Retail: Robert Fisher

Clinical: Dewey Garner

Industrial: John Atkinson - Norman Kobayashi

Education: Bruce Martin

Report of Workshops

LUNCH

Fifth General Session: TUESDAY, AUGUST 13th - Ballroom 6th Floor

2:00 p.m. *Panel Discussion:* Chapter Service Projects*

4 to 6 Panel Members

Election of Officers

DINNER

OPEN

Sixth General Session: WEDNESDAY, AUGUST 14th - Ballroom 6th Floor

9:00 a.m. *Open Discussion between Membership and New Officers*

Unfinished Business

Report of the Resolution Committee: Dewey D. Garner

Closing Ritual

Installation

Adjournment of the 37th Grand Council Convention

2:00 p.m. *Executive Committee Meeting:* Audubon Room 5th Floor

7:00 p.m. 95th Anniversary Banquet: Ballroom 6th Floor

* *The following chapters have been asked to participate:*

EPSILON

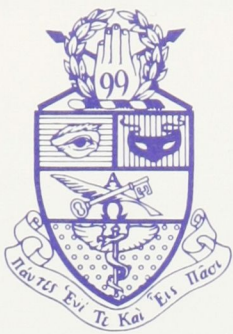
MU

BETA OMICRON

GAMMA XI

DELTA THETA

MU OMICRON PI



KAPPA PSI PHARMACEUTICAL FRATERNITY
1313 W. ROBINHOOD DRIVE
STOCKTON, CALIFORNIA 95207

37th Grand Council Convention

August 11, 12, 13 and 14

CONTINENTAL HOTEL, Kansas City, Missouri

BE THERE!!!

“The Kappa Psi Century Club”

WHY SHOULD YOU BE A MEMBER?

**TO HELP SHAPE THE FUTURE BY CONTINUING TO
PROMOTE THE PRINCIPLES OF KAPPA PSI.**

WHAT IS IT?

**A FUND TO PAY TRIBUTE TO THE SECOND CENTURY OF
KAPPA PSI SERVICE.**

HOW CAN YOU BECOME A MEMBER?

**BY YOUR CONTRIBUTION OF \$100.00 OR MORE. ALL CONTRIBUTIONS
SHOULD BE SENT TO:**

**DR. BEN HERSHENSON
KAPPA PSI CENTURY CLUB
179 LONGWOOD AVENUE
BOSTON, MA 02115**